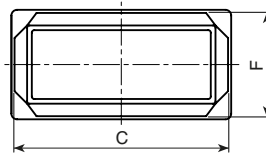
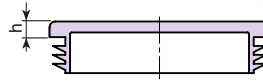
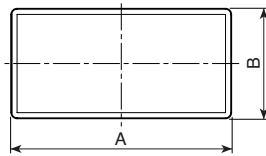


Jalkatulppa suorakaideputkelle

Materiaali:
Polyethylene (LDPE).

Väri:
Black (RAL 9011).



Art.	AxB	H	h	CxF	Seinä- vahvuus (min - max)	g
F-20X10	20x10	14	3	0,8-2	1	
F-20X15	20x15	17	5	1-2	2	
F-G1X1E	25x10	15	3	0,8-2	1,5	
F-E1YF1	25x15	17	3	1-2,5	2,5	
F-25X20	25x20	15	3	1-3	3	
F-30X10	30x10	17	5	1-2	2	
F-30X15	30x15	17	5	1-2,5	3	
F-30X20	30x20	17	5	1-3	3,5	
F-35X10	35x10	17	5	1-2	3	
F-35X20	35x20	17	5	1-2,5	4	
F-35X25	35x25	17	5	1-3	5	
F-35X30	35x30	17	5	1-1,5	6	
F-40X15	40x15	17	5	1-1,5	3,5	
F-40X20	40x20	17	5	1-2,5	4,5	
F-40X25	40x25	17	5	1-3	5	
F-40X30	40x30	17	5	1-3	7	
F-40X35	40x35	17	5	1-3	7	
F-45X15	45x15	17	5	1,5-2	3,5	
F-45X20	45x20	17	5	1-3	5	
F-45X25	45x25	17	5	1-3	5,5	
F-45X30	45x30	17	5	1-2,5	6	
F-45X35	45x35	17	5	1-3,5	6	
F-50X20	50x20	20	5	1-3	6	
F-50X25	50x25	20	5	1-3	6,5	
F-50X30	50x30	20	5	1-3	7,5	
F-50X35	50x35	20	5	1-3,5	11	
F-50X40	50x40	18	5	1,5-2,5	11	

Art.	AxB	H	h	CxF	tube thickness (min - max)	g
F- X 0	55x40	20	5	1,5-4	11,5	
F- 0X20	60x20	20	5	1-3	7,5	
F- 0X2	60x25	20	5	1-2,5	8	
- 0X30	60x30	20	5	1-2,5	9,5	
F-60X	60x35	20	5	1,5-3,5	12	
- 0X 0	60x40	20	5	1-3	11,5	
-60X45	60x45	20	5	1,5-4	14	
F- X	60x50	20	5	1,5-3,5	14	
F- 0X20	70x20	24	5	1-2	12,5	
F- X2	70x25	24	5	1,5-2,5	12,5	
F- 0X30	70x30	24	5	1-2	14,5	
F- X3	70x35	24	5	1,5-3,5	15	
F- X4	70x40	24	5	1,5-2,5	17	
-8 X2	80x20	23	5	1,5-2	14	
F-80X30	80x30	23	5	1-2,5	12,5	
F- 0X40	80x40	23	5	1-3	16	
F-8 X	80x50	23	5	2-4	22	
F- 0X 0	80x60	29	5	1,5-3,5	27	
F- X20	90x20	20	5	1-2,5	12,5	
F- 0X40	90x40	20	5	2-4	13,5	
F- X	90x50	28	6	2-4,5	17,5	
F- X	90x70	28	6	3-5,5	18,5	
)00x30	20	5	1,5-3,5	17		
)2	100x40	20	5	1,5-4	20,5	
)2	100x50	20	5	1,5-4,5	30	
● T482.D100X6001	100x60	20	5	1,5-4,5	35	
● T482.D100X8001	100x80	20	5	3-5,5	42	