

**FAMILY - H
KNURLED
HANDWHEELS**



 **ROLLMEX**

H765



PA6
+GF

UL94
HB



KNURLED HOLLOWED HANDWHEEL WITH THREADED THROUGH FEMALE INSERT

Material:

Reinforced polyamide.
Oils and greases resistant.

Surface:

Satin.

Colour:

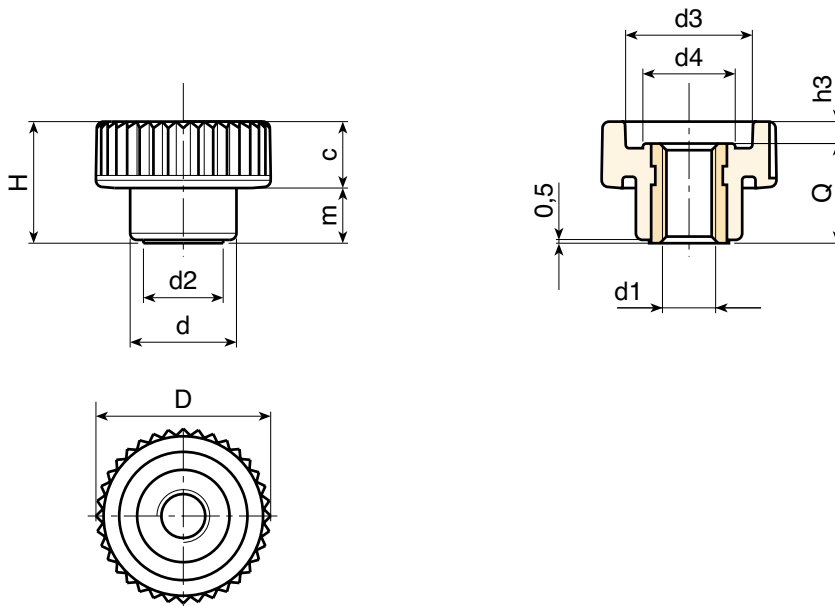
Black (RAL 9011).

Main Insert:

Brass right through threaded bush (tolerance 6H).

SPECIAL REQUEST:

- It is possible to supply the inserts in different materials, on request and for quantities.
- It is possible to supply colours as shown in the table at pag. H-19, on request and for quantities.



	art.	D	H	d	m	c	d2	d3	d4	h3	d1 6H	Q	g
●	H76515.TM0401	15	10,5	10	4,5	6	8	10	7,5	2	M04	8,5	2
●	H76515.TM0501	15	10,5	10	4,5	6	8	10	7,5	2	M05	8,5	2
●	H76521.TM0501	21	15	13	6,5	8,5	9,5	15	10,5	2,5	M05	12,5	5
●	H76521.TM0601	21	15	13	6,5	8,5	9,5	15	10,5	2,5	M06	12,5	5
●	H76526.TM0601	26	18	16	8,5	9,5	12	19	13	3	M06	15	10
●	H76526.TM0801	26	18	16	8,5	9,5	12	19	13	3	M08	15	10
●	H76533.TM0801	32	23	20	10,5	12,5	15	23	16	5	M08	18	16
●	H76533.TM1001	32	23	20	10,5	12,5	15	23	16	5	M10	18	16
●	H76540.TM0801	40	28	25	12,5	15,5	18	28	21	6	M08	22	31
●	H76540.TM1001	40	28	25	12,5	15,5	18	28	21	6	M10	22	32
●	H76540.TM1201	40	28	25	12,5	15,5	18	28	21	6	M12	22	32
●	H76540.TM1401	40	28	25	12,5	15,5	18	28	21	6	M14	22	34

Presumable presence in the stock in %

ROLLMEX 90% (●) 40% (●) 5% (●)

KNURLED HOLLOWED HANDWHEEL WITH THREADED THROUGH FEMALE INSERT

H765 PIN

+135°
-20°

PA6
+GF

UL94
HB

ROHS
2011/65/EU

INOX

Material:

Reinforced polyamide.
Oils and greases resistant.

Surface:

Satin.

Colour:

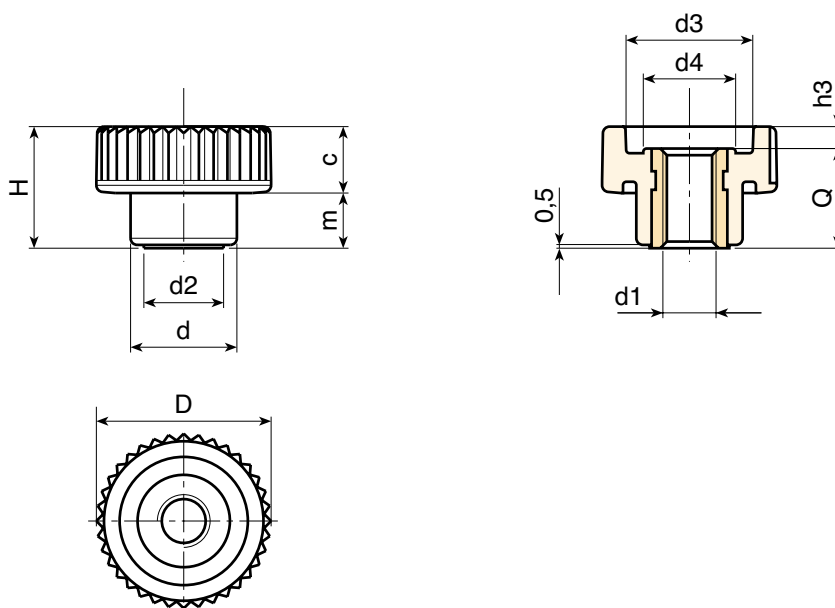
Black (RAL 9011).



Main Insert:

Stainless steel right through threaded bush (AISI 303)
(tolerance 6H).

SPECIAL REQUEST:

- It is possible to supply colours as shown in the table at pag. H-19, on request and for quantities.



	art.	D	H	d	m	c	d2	d3	d4	h3	d1 6H	Q	 g
●	H76515.TM0401PIN	15	10,5	10	4,5	6	8	10	7,5	2	M04	8,5	3
●	H76515.TM0501PIN	15	10,5	10	4,5	6	8	10	7,5	2	M05	8,5	3
●	H76521.TM0501PIN	21	15	13	6,5	8,5	9,5	15	10,5	2,5	M05	12,5	6
●	H76521.TM0601PIN	21	15	13	6,5	8,5	9,5	15	10,5	2,5	M06	12,5	6
●	H76526.TM0601PIN	26	18	16	8,5	9,5	12	19	13	3	M06	15	11,5
●	H76526.TM0801PIN	26	18	16	8,5	9,5	12	19	13	3	M08	15	11,5
●	H76533.TM0801PIN	32	23	20	10,5	12,5	15	23	16	5	M08	18	18
●	H76533.TM1001PIN	32	23	20	10,5	12,5	15	23	16	5	M10	18	18
●	H76540.TM0801PIN	40	28	25	12,5	15,5	18	28	21	6	M08	22	32
●	H76540.TM1001PIN	40	28	25	12,5	15,5	18	28	21	6	M10	22	31
●	H76540.TM1201PIN	40	28	25	12,5	15,5	18	28	21	6	M12	22	34

Presumable presence in the stock in %

 90%  40%  5% 



H766



KNURLED HOLLOWED HANDWHEEL WITH THREADED STUD

Material:

Reinforced polyamide.
Oils and greases resistant.

Surface:

Satin.

Colour:

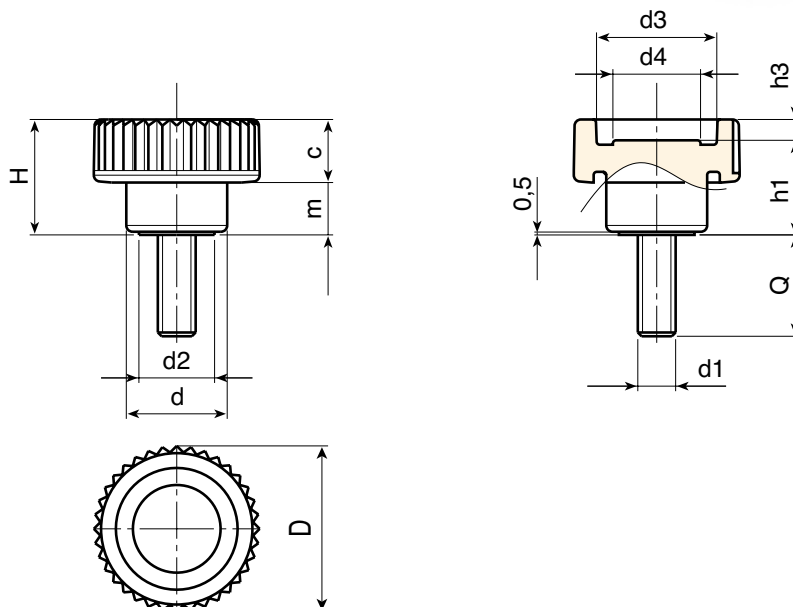
Black (RAL 9011).

Main Insert:

Zinc plated steel threaded stud (tolerance 6g).

SPECIAL REQUESTS:

- It is possible to supply inserts in different lengths or by special design, on request and for quantities.
- It is possible to supply inserts in different materials, on request and for quantities.
- It is possible to supply colours as shown in the table on page H-19, on request and for quantities.



art.	D	H	d	m	c	d2	d3	d4	h1	h3	LM	d1 6g	Q	△ g
H76615.TM04X..01	15	10,5	10	4,5	6	8	10	7,5	8,5	2	40	M04	11-15-19	2,5-3-3,5
H76615.TM05X..01	15	10,5	10	4,5	6	8	10	7,5	8,5	2	40	M05	11-15-19	4-4,5-5
H76621.TM05X..01	21	15	13	6,5	8,5	9,5	15	10,5	12,5	2,5	40	M05	10-16-20-30	6,5-6,5-7,5-9,5
H76621.TM06X..01	21	15	13	6,5	8,5	9,5	15	10,5	12,5	2,5	40	M06	10-16-20-25	7,5-8,5-9-10,5
H76626.TM06X..01	26	18	16	8,5	9,5	12	19	13	15	3	80	M06	10-16-20-25	10-11-11,5-12,5
H76626.TM08X..01	26	18	16	8,5	9,5	12	19	13	15	3	80	M08	16-20-25	15,5-16,5-18,5
H76633.TM08X..01	32	23	20	10,5	12,5	15	23	16	18	5	80	M08	16-20-30	21-24-30
H76633.TM10X..01	32	23	20	10,5	12,5	15	23	16	18	5	80	M10	20-30-40	30-30,5-35,5
H76640.TM08X..01	40	28	25	12,5	15,5	18	28	21	22	6	100	M08	16-30-40	29,5-38-44
H76640.TM10X3001	40	28	25	12,5	15,5	18	28	21	22	6	100	M10	30	46
H76640.TM12X5001	40	28	25	12,5	15,5	18	28	21	22	6	100	M12	50	78
H76640.TM14X..01	40	28	25	12,5	15,5	18	28	21	22	6	100	M14	A.R.	-

Enter the stud length choice in the two .. of the article code. Lengths by request with 250 pieces minimum quantity.

LM = Maximum mouldable length.

A.R. = by request.

Presumable presence in the stock in %



KNURLED HOLLOWED HANDWHEEL WITH THREADED STUD

H766 CIN

+135°
-20°

PA6
+GF

UL94
HB

RoHS
2011/06/09

INOX

Material:

Reinforced polyamide.
Oils and greases resistant.

Surface:

Satin.

Colour:

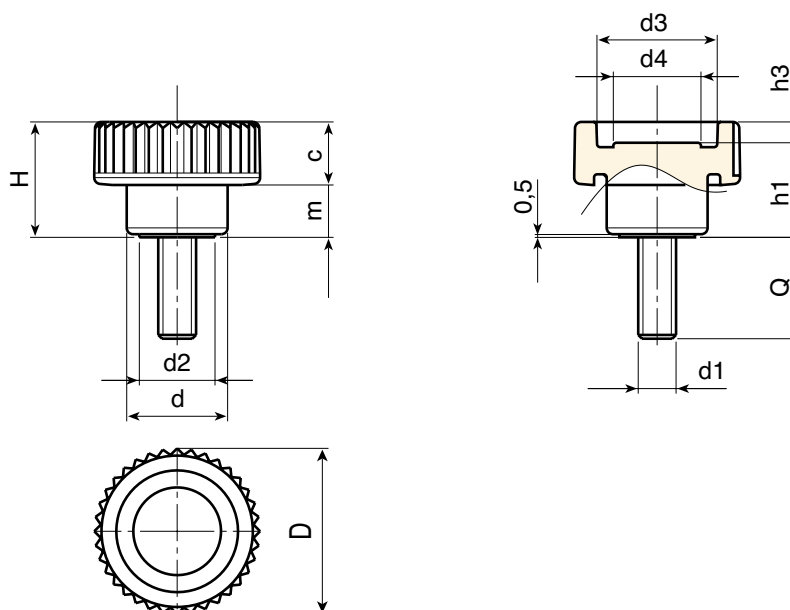
Black (RAL 9011).

Main Insert:

Stainless steel threaded stud (AISI 303) (tolerance 6g).

SPECIAL REQUESTS:

- It is possible to supply inserts in different lengths or by special design, on request and for quantities.
- It is possible to supply colours as shown in the table on page H-19, on request and for quantities.



	art.	D	H	d	m	c	d2	d3	d4	h1	h3	LM	d1 6g	Q	g
●	H76615.TM04X..01CIN	15	10,5	10	4,5	6	8	10	7,5	8,5	2	40	M04	A.R.	-
●	H76615.TM05X..01CIN	15	10,5	10	4,5	6	8	10	7,5	8,5	2	40	M05	A.R.	-
●	H76621.TM05X1601CIN	21	15	13	6,5	8,5	9,5	15	10,5	12,5	2,5	40	M05	16	9,5
●	H76621.TM06X..01CIN	21	15	13	6,5	8,5	9,5	15	10,5	12,5	2,5	40	M06	A.R.	-
●	H76626.TM06X..01CIN	26	18	16	8,5	9,5	12	19	13	15	3	80	M06	A.R.	-
●	H76626.TM08X2001CIN	26	18	16	8,5	9,5	12	19	13	15	3	80	M08	20	16,5
●	H76633.TM08X4001CIN	32	23	20	10,5	12,5	15	23	16	18	5	80	M08	40	36
●	H76633.TM10X..01CIN	32	23	20	10,5	12,5	15	23	16	18	5	80	M10	A.R.	-
●	H76640.TM08X..01CIN	40	28	25	12,5	15,5	18	28	21	22	6	100	M08	A.R.	-
●	H76640.TM10X..01CIN	40	28	25	12,5	15,5	18	28	21	22	6	100	M10	A.R.	-
●	H76640.TM12X..01CIN	40	28	25	12,5	15,5	18	28	21	22	6	100	M12	A.R.	-
●	H76640.TM14X..01CIN	40	28	25	12,5	15,5	18	28	21	22	6	100	M14	A.R.	-

Enter the stud length choice in the two .. of the article code. Lengths by request with 250 pieces minimum quantity.

LM = Maximum mouldable length.

A.R. = by request.

Presumable presence in the stock in %

() 90% (●) 40% (●) 5% (●)

ROLLMEX

H767



PA6
+GF

UL94
HB



KNURLED HOLLOWED HANDWHEEL WITH THREADED FEMALE INSERT

Material:

Reinforced polyamide.
Oils and greases resistant.

Surface:

Satin.

Colour:

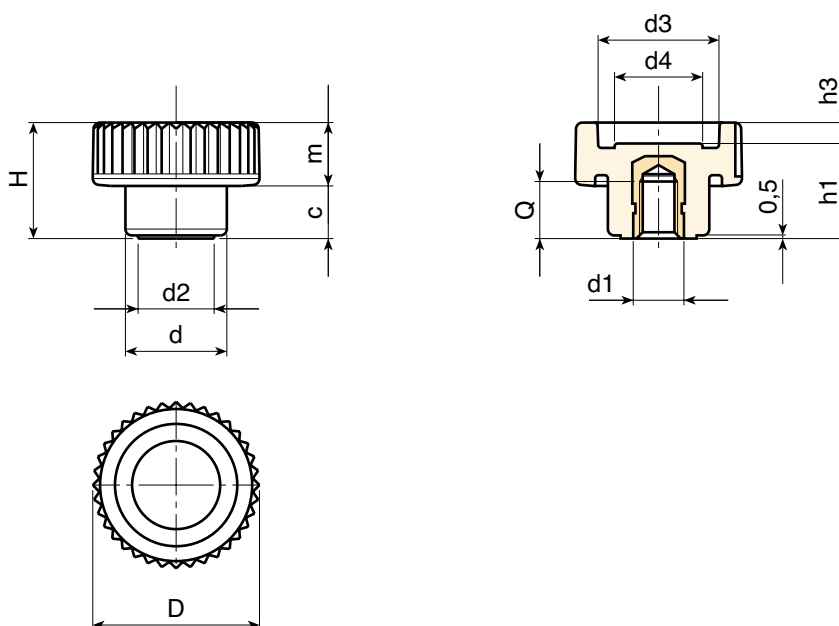
Black (RAL 9011).

Main Insert:

Brass blind threaded bush (tolerance 6H).

SPECIAL REQUEST:

- It is possible to supply the inserts in different materials, on request and for quantities.
- It is possible to supply colours as shown in the table at pag. H-19, on request and for quantities.



	art.	D	H	d	m	c	d2	d3	d4	h1	h3	d1 6H	Q	g
●	H76721.TM0501	21	15	13	6,5	8,5	9,5	15	10,5	12,5	2,5	M05	7	5,5
●	H76721.TM0601	21	15	13	6,5	8,5	9,5	15	10,5	12,5	2,5	M06	7	6
●	H76726.TM0601	26	18	16	8,5	9,5	12	19	13	15	3	M06	9	8
●	H76726.TM0801	26	18	16	8,5	9,5	12	19	13	15	3	M08	8	8,5
●	H76733.TM0801	32	23	20	10,5	12,5	15	23	16	18	5	M08	11	15,5
●	H76733.TM1001	32	23	20	10,5	12,5	15	23	16	18	5	M10	10	16
●	H76740.TM0801	40	28	25	12,5	15,5	18	28	21	22	6	M08	14	27
●	H76740.TM1001	40	28	25	12,5	15,5	18	28	21	22	6	M10	14	28
●	H76740.TM1201	40	28	25	12,5	15,5	18	28	21	22	6	M12	12	29

Presumable presence in the stock in %

90% (●) 40% (●) 5% (●)

KNURLED SOLID HANDWHEEL WITH THREADED FEMALE INSERT

H757



PA6
+GF

UL94
HB



Material:

Reinforced polyamide.
Oils and greases resistant.

Surface:

Satin.

Colour:

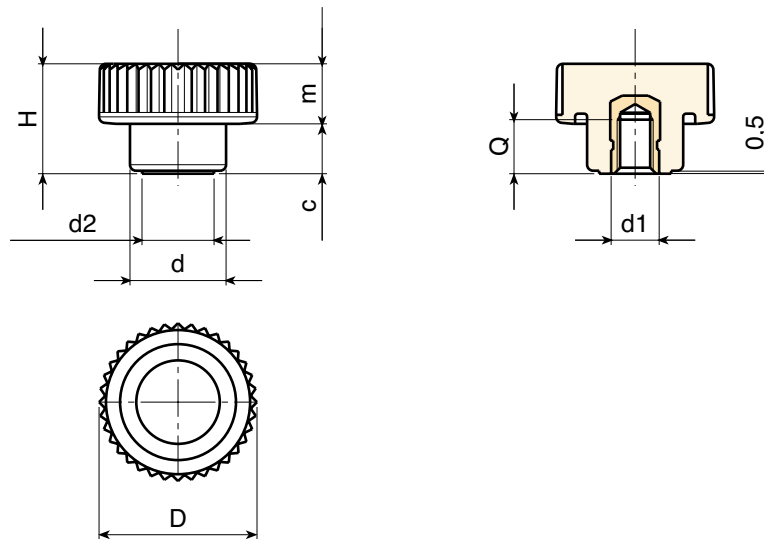
Black (RAL 9011).

Main Insert:

Brass blind threaded bush (tolerance 6H).

SPECIAL REQUEST:

- It is possible to supply the inserts in different materials, on request and for quantities.
- It is possible to supply colours as shown in the table at pag. H-19, on request and for quantities.



	art.	D	H	d	m	c	d2	d1 6H	Q	⚖ g
●	H75726.TM0501	26	18	16	8,5	9,5	12	M05	6	9
●	H75726.TM0601	26	18	16	8,5	9,5	12	M06	9	10
●	H75726.TM0801	26	18	16	8,5	9,5	12	M08	8	11

Presumable presence in the stock in %

90% (●) 40% (●) 5% (●) |

H753



PA6
+GF

UL94
HB



KNURLED SOLID HANDWHEEL WITH THREADED STUD

Material:

Reinforced polyamide.
Oils and greases resistant.

Surface:

Satin.

Colour:

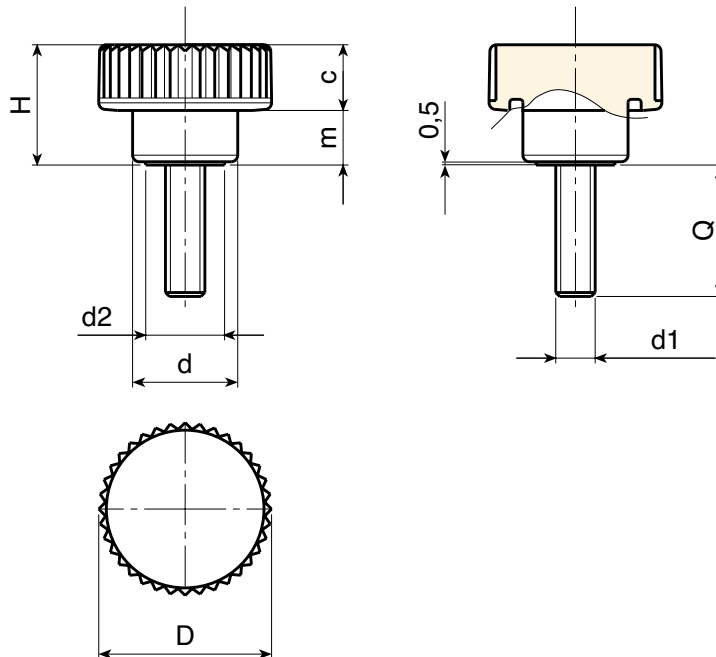
Black (RAL 9011).

Main Insert:

Zinc plated steel threaded stud (tolerance 6g).

SPECIAL REQUESTS:

- It is possible to supply inserts in different lengths or by special design, on request and for quantities.
- It is possible to supply inserts in different materials, on request and for quantities.
- It is possible to supply colours as shown in the table on page H-19, on request and for quantities.



	art.	D	H	d	m	c	d2	LM	d1 6g	Q	△ g
●	H75326.TM05X..01	26	18	16	8,5	9,5	12	50	M05	A.R.	-
	H75326.TM06X..01	26	18	16	8,5	9,5	12	50	M06	20-25	13-14
	H75326.TM08X..01	26	18	16	8,5	9,5	12	50	M08	20-30	20-22

Enter the stud length choice in the two .. of the article code. Lengths by request with 250 pieces minimum quantity.

LM = Maximum mouldable length.

A.R. = by request.

Presumable presence in the stock in %

||||| ||||| () 90% () 40% () 5% ()

KNURLED HANDWHEEL WITH HUB AND THREADED FEMALE INSERT

H758



Material:

Reinforced polyamide.
Oils and greases resistant.

Surface:

Satin.

Colour:

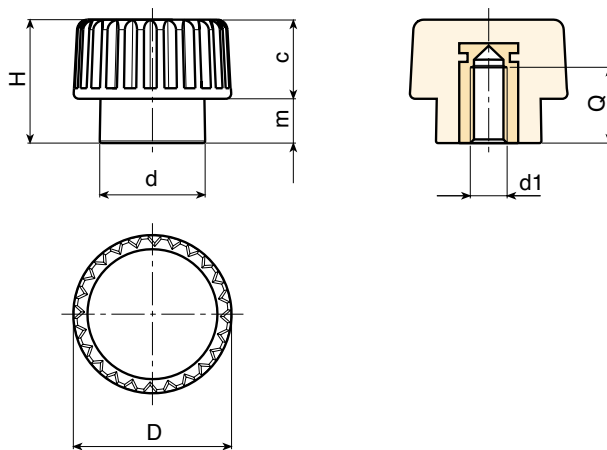
Black (RAL 9011).

Main Insert:

Brass blind threaded bush (tolerance 6H).

SPECIAL REQUEST:

- It is possible to supply the inserts in different materials, on request and for quantities.
- It is possible to supply colours as shown in the table at pag. H-19, on request and for quantities.



	art.	D	H	d	m	c	d1 6H	Q	⚖ g
●	H75815.TM0401	15	12	10	4,5	7,5	M04	7	4
●	H75815.TM0501	15	12	10	4,5	7,5	M05	7	4
●	H75815.TM0601	15	12	10	4,5	7,5	M06	7	4

Presumable presence in the stock in %

90% 40% 5%



H759



PA6
+GF

UL94
HB



KNURLED HANDWHEEL WITH HUB AND THREADED STUD

Material:

Reinforced polyamide.
Oils and greases resistant.

Surface:

Satin.

Colour:

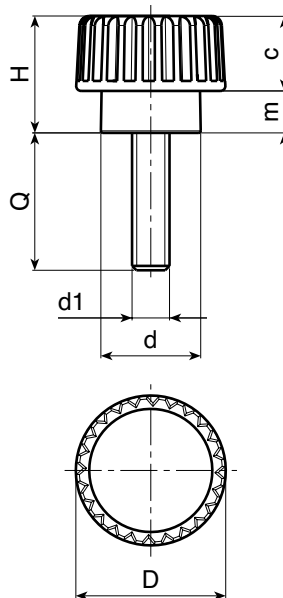
Black (RAL 9011).

Main Insert:

Zinc plated steel threaded stud (tolerance 6g).

SPECIAL REQUESTS:

- It is possible to supply inserts in different lengths or by special design, on request and for quantities.
- It is possible to supply inserts in different materials, on request and for quantities.
- It is possible to supply colours as shown in the table on page H-19, on request and for quantities.



art.	D	H	d	m	c	LM	d1 6g	Q	Δ g
H75915.TM03X..01	15	12	10	4,5	7,5	70	M03	11-24	3-3,5
H75915.TM04X2001	15	12	10	4,5	7,5	70	M04	10-20-30	3,5-4-4,5
H75915.TM05X..01	15	12	10	4,5	7,5	70	M05	10-16-20-30	4-4,5-5,5-6,5
H75915.TM06X..01	15	12	10	4,5	7,5	70	M06	10-16-20	5-6-7,5

Enter the stud length choice in the two .. of the article code. Lengths by request with 250 pieces minimum quantity.

LM = Maximum mouldable length.

Presumable presence in the stock in %

(🏭) 90% (●) 40% (●) 5% (●)

KNURLED HANDWHEEL WITHOUT HUB AND THREADED STUD

H760



Material:

Reinforced polyamide.
Oils and greases resistant.

Surface:

Satin.

Colour:

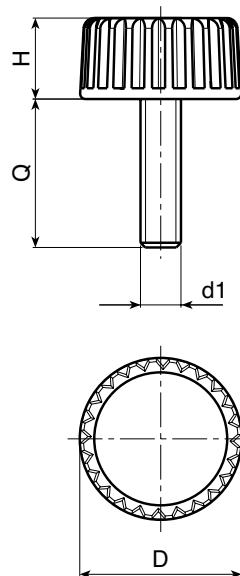
Black (RAL 9011).

Main Insert:

Zinc plated steel threaded stud (tolerance 6g).

SPECIAL REQUESTS:

- It is possible to supply inserts in different lengths or by special design, on request and for quantities.
- It is possible to supply inserts in different materials, on request and for quantities.
- It is possible to supply colours as shown in the table on page H-19, on request and for quantities.



art.	D	H	LM	d1 6g	Q	Δ g
H76015.TM04X..01	15	8	77	M04	13-15-19-24	2-2-2,5-3
H76015.TM05X..01	15	8	77	M05	15-19-24-29	4-4,5-5-5,5
H76015.TM06X..01	15	8	77	M06	15-19-24-29	5,5-6,5-7-7,5

Enter the stud length choice in the two .. of the article code. Lengths by request with 250 pieces minimum quantity.

LM = Maximum mouldable length.

Presumable presence in the stock in %

(🏭) 90% (●) 40% (●) 5% (●) | **ROLLMEX** |

H770



PA6
+GF

UL94
HB



KNURLED HANDWHEEL WITH THREADED FEMALE INSERT

Material:

Reinforced polyamide.
Oils and greases resistant.

Surface:

Satin.

Colour:

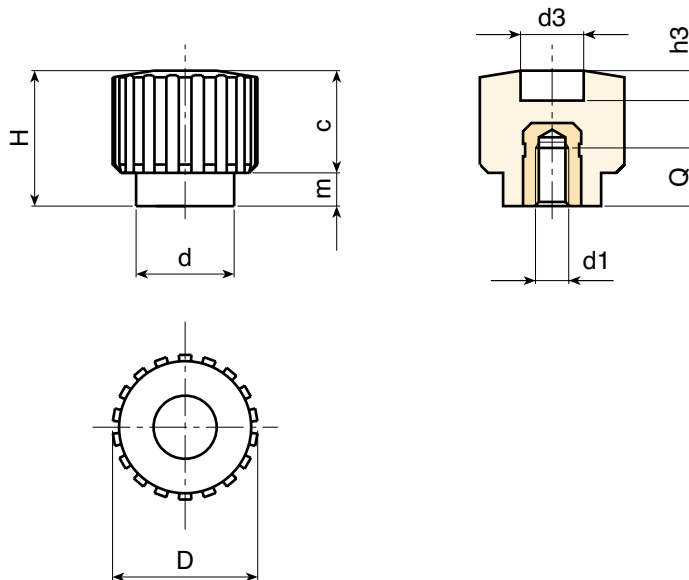
Black (RAL 9011).

Main Insert:

Brass blind threaded bush (tolerance 6H).

SPECIAL REQUEST:

- It is possible to supply the inserts in different materials, on request and for quantities.
- It is possible to supply colours as shown in the table at pag. H-19, on request and for quantities.



	art.	D	H	d	m	c	d3	h3	d1 6H	Q	g
●	H77018.TM0401	17,5	17,5	12	4	13,5	9	5	M04	7	5
●	H77018.TM0501	17,5	17,5	12	4	13,5	9	5	M05	7	5
●	H77018.TM0601	17,5	17,5	12	4	13,5	9	5	M06	7	5

Presumable presence in the stock in %

ROLLMEX 90% (●) 40% (●) 5% (●)

KNURLED HANDWHEEL WITH THREADED STUD

H771



PA6
+GF

UL94
HB



Material:

Reinforced polyamide.
Oils and greases resistant.

Surface:

Satin.

Colour:

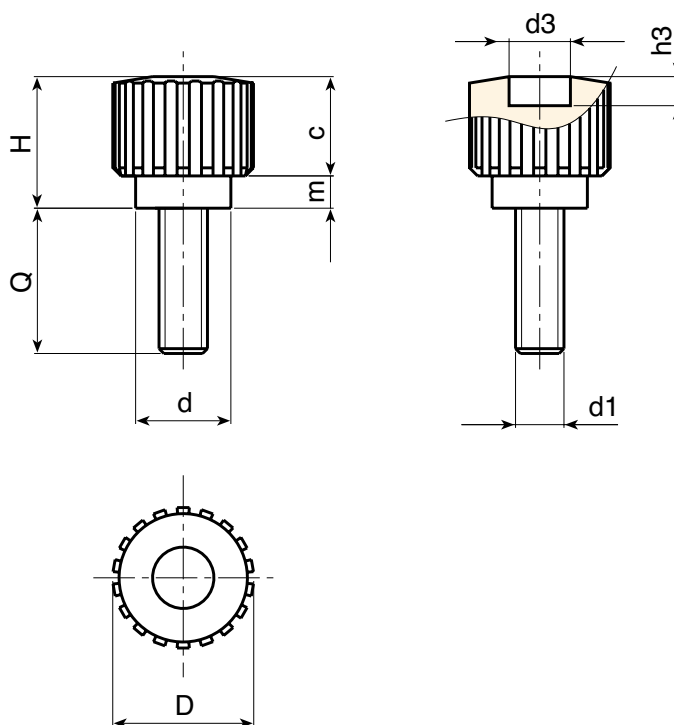
Black (RAL 9011).

Main Insert:

Zinc plated steel threaded stud (tolerance 6g).

SPECIAL REQUESTS:

- It is possible to supply inserts in different lengths or by special design, on request and for quantities.
- It is possible to supply inserts in different materials, on request and for quantities.
- It is possible to supply colours as shown in the table on page H-19, on request and for quantities.



art.	D	H	d	m	c	d3	h3	LM	d1 6g	Q	Δ g
H77118.TM04X..01	17,5	17,5	12	4	13,5	9	5	50	M04	10-16-30	6-6,5-8
H77118.TM05X..01	17,5	17,5	12	4	13,5	9	5	60	M05	10-16-20	6,5-7-8
H77118.TM06X..01	17,5	17,5	12	4	13,5	9	5	60	M06	16-20	8,5-9

Enter the stud length choice in the two .. of the article code. Lengths by request with 250 pieces minimum quantity.

LM = Maximum mouldable length.

Presumable presence in the stock in %

(☰) 90% (●) 40% (●) 5% (●)



H772



PA6
+GF

UL94
HB



KNURLED HANDWHEEL WITH RIGHT THROUGH THREADED FEMALE INSERT

Material:

Reinforced polyamide.
Oils and greases resistant.

Surface:

Satin.

Colour:

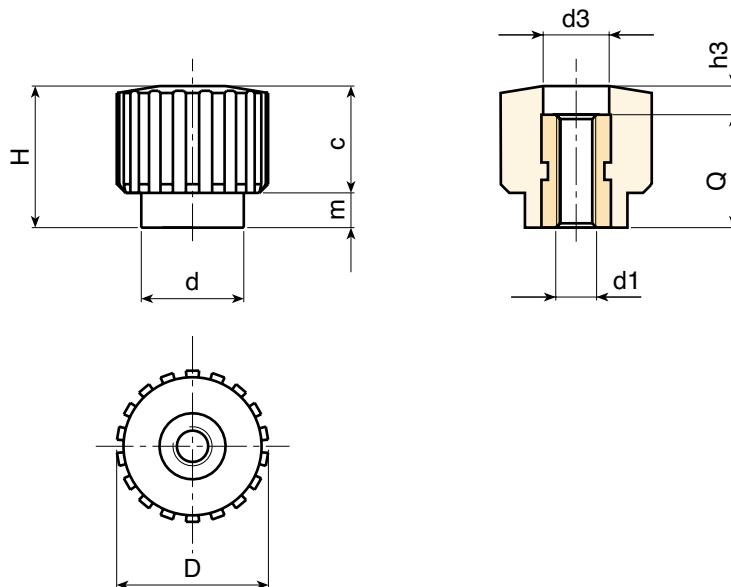
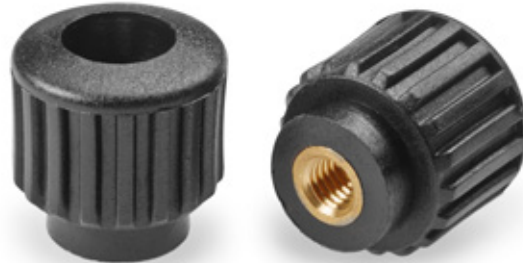
Black (RAL 9011).

Main Insert:

Brass right through threaded bush (tolerance 6H).

SPECIAL REQUEST:

- It is possible to supply the inserts in different materials, on request and for quantities.
- It is possible to supply colours as shown in the table at pag. H-19, on request and for quantities.



	art.	D	H	d	m	c	d3	h3	d1 6H	Q	g
●	H77218.TM0401	17,5	17,5	12	4	13,5	9	4,5	M04	13	5,5
●	H77218.TM0501	17,5	17,5	12	4	13,5	9	4,5	M05	13	5,5
●	H77218.TM0601	17,5	17,5	12	4	13,5	9	4,5	M06	13	5,5

Presumable presence in the stock in %

90%
 40%
 5%

KNURLED HANDWHEEL WITH SCREWDRIVERS SLOT AND THREADED FEMALE INSERT

H773



PA6
+GF

UL94
HB



Material:

Reinforced polyamide.
Oils and greases resistant.

Surface:

Satin.

Colour:

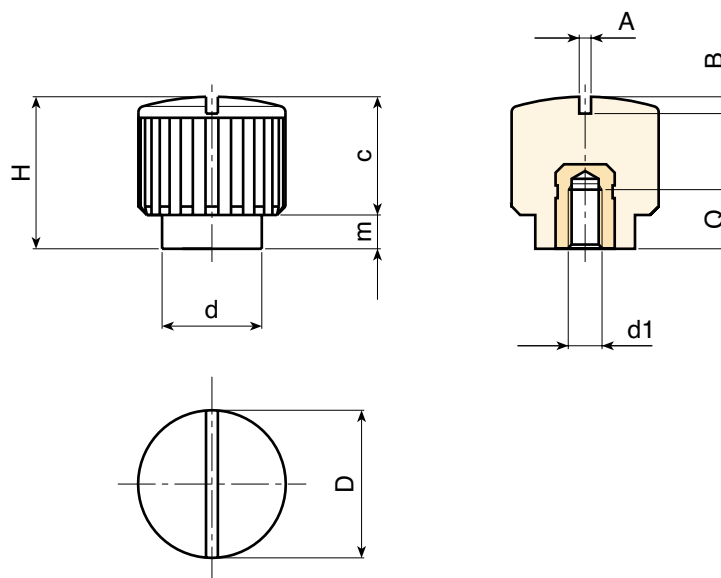
Black (RAL 9011).

Main Insert:

Brass blind threaded bush (tolerance 6H).

SPECIAL REQUEST:

- It is possible to supply the inserts in different materials, on request and for quantities.
- It is possible to supply colours as shown in the table at pag. H-19, on request and for quantities.



	art.	D	H	d	m	c	A	B	d1 6H	Q	Δ g
●	H77318.TM0401	17,5	18	12	4	14	1,2	1,5	M04	7	6,5
●	H77318.TM0501	17,5	18	12	4	14	1,2	1,5	M05	7	7
●	H77318.TM0601	17,5	18	12	4	14	1,2	1,5	M06	7	7

Presumable presence in the stock in %

90% 40% 5%

H774



PA6
+GF

UL94
HB



KNURLED HANDWHEEL WITH SCREWDRIVERS SLOT AND THREADED STUD

Material:

Reinforced polyamide.
Oils and greases resistant.

Surface:

Satin.

Colour:

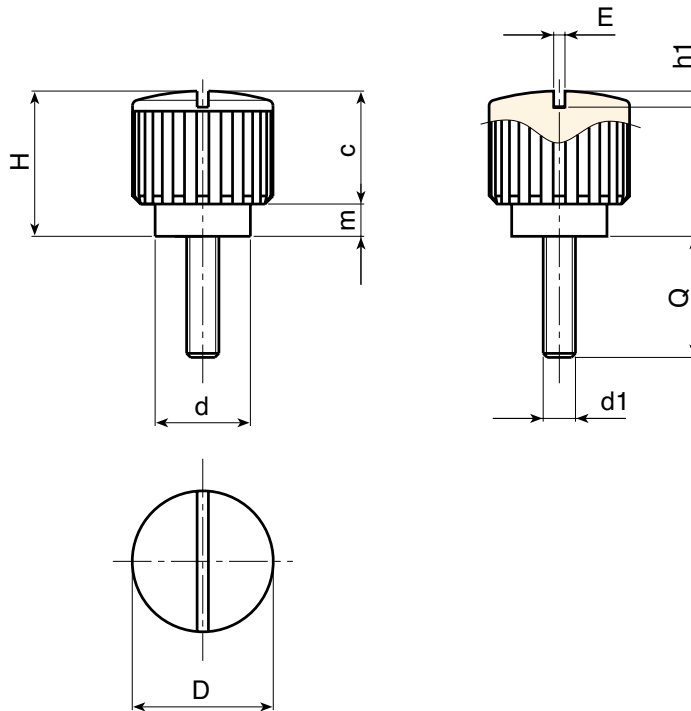
Black (RAL 9011).

Main Insert:

Zinc plated steel threaded stud (tolerance 6g).

SPECIAL REQUESTS:

- It is possible to supply inserts in different lengths or by special design, on request and for quantities.
- It is possible to supply inserts in different materials, on request and for quantities.
- It is possible to supply colours as shown in the table on page H-19, on request and for quantities.



	art.	D	H	d	m	c	A	B	LM	d1 6g	Q	△ g
●	H77418.TM04X3001	17,5	18	12	4	14	1,2	1,5	50	M04	30	7,5
●	H77418.TM05X..01	17,5	18	12	4	14	1,2	1,5	60	M05	A.R.	-
●	H77418.TM06X..01	17,5	18	12	4	14	1,2	1,5	60	M06	A.R.	-

Enter the stud length choice in the two .. of the article code. Lengths by request with 250 pieces minimum quantity.

LM = Maximum mouldable length.

A.R. = by request.

Presumable presence in the stock in %



KNURLED HANDWHEEL WITH SCREWDRIVERS SLOT AND THREADED STUD

H172



PA6
+GF

UL94
HB



Material:

Reinforced polyamide.
Oils and greases resistant.

Surface:

Satin.

Colour:

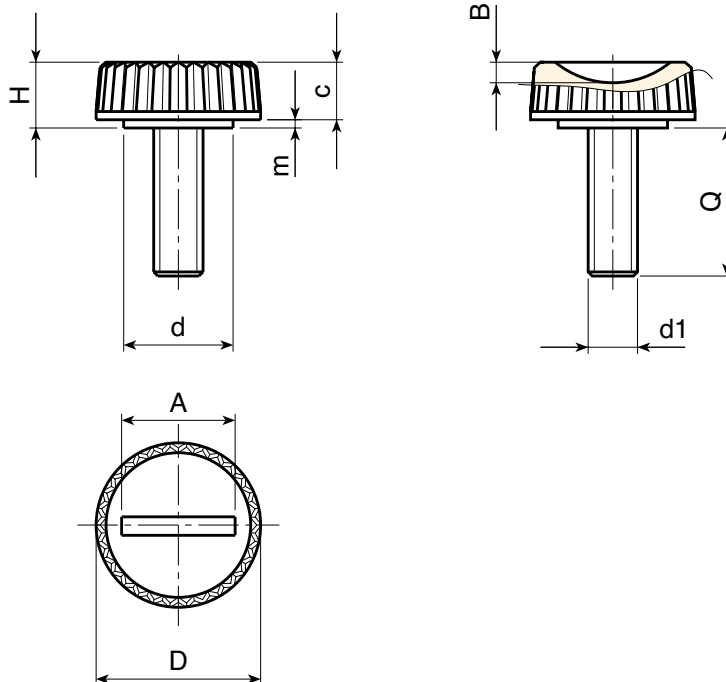
Black (RAL 9011).

Main Insert:

Zinc plated steel threaded stud (tolerance 6g).

SPECIAL REQUESTS:

- It is possible to supply inserts in different lengths or by special design, on request and for quantities.
- It is possible to supply inserts in different materials, on request and for quantities.
- It is possible to supply colours as shown in the table on page H-19, on request and for quantities.



	art.	D	H	d	m	c	A	B	LM	d1 6g	Q	g
●	H17220.TM06X..01	20	8	13,5	1	7	14	2,5	39	M06	A.R.	-

Enter the stud length choice in the two .. of the article code. Lengths by request with 500 pieces minimum quantity.

LM = Maximum mouldable length.

A.R. = by request.

Presumable presence in the stock in %

() 90% () 40% () 5% ()



H171 CON

KNURLED HANDWHEEL WITH SHORT HUB AND THREADED FEMALE INSERT



PA6
+GF

UL94
HB



Material: Reinforced polyamide. Oils and greases resistant.

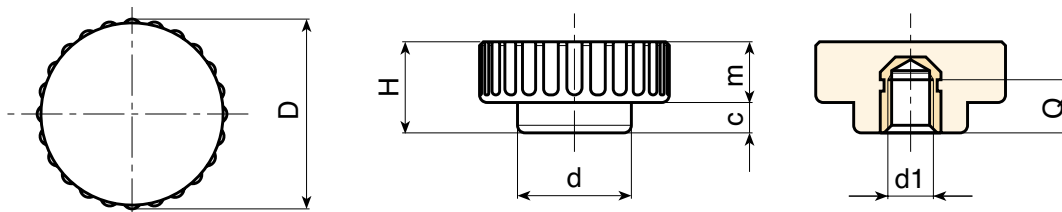
Surface: Satin.

Colour: Black (RAL 9011).

Main Insert: Brass blind threaded bush (tolerance 6H).

SPECIAL REQUEST:

- None.



	art.	D	H	d	m	c	d1 6H	Q	△ g
●	H17125.TM0601CON	25	12	15,5	4	8	M06	7	7
●	H17125.TM0801CON	25	12	15,5	4	8	M06	7	8

H171

KNURLED HANDWHEEL WITH SHORT HUB AND THREADED STUD



PA6
+GF

UL94
HB



Material:

Reinforced polyamide. Oils and greases resistant.

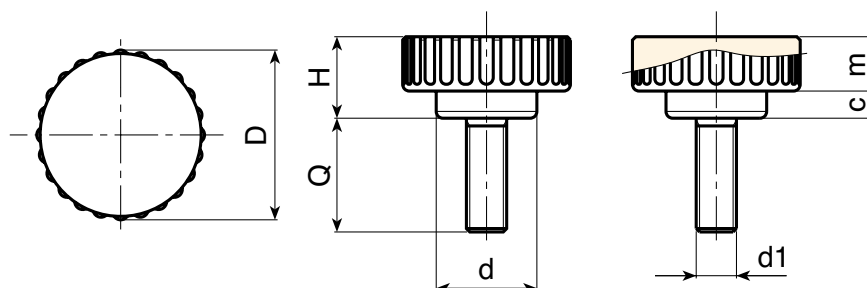
Surface: Satin.

Colour: Black (RAL 9011).

Main Insert: Zinc plated steel threaded stud (tolerance 6g).

SPECIAL REQUESTS:

- It is possible to supply inserts in different lengths or by special design, on request and for quantities.



	art.	D	H	d	m	c	LM	d1 6g	Q	△ g
	H17125.TM06X2001	25	12	15,5	4	8	40	M06	20	11
	H17125.TM08X2001	25	12	15,5	4	8	40	M08	20	15

Lengths by request with 250 pieces minimum quantity.




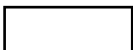












LM = Maximum mouldable length.

Presumable presence in the stock in %










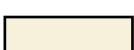


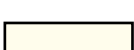

(■) 90% (●) 40% (●) 5% (●)

COLOUR CHART

RAL COLOURS CODING

Colour		RAL	Cod.
Black		9011	01
Orange		2004	02
Orange		2011	03
White		9010	04
Blue		5002	05
Blue		5005	06
Blue		5015	07
Blue		5018	19
Blue		5019	21
Blue		5010	22
Yellow		1007	09
Yellow		1021	10
Grey		7024	12
Grey		7035	13
Red		3000	16
Green		6024	17

OTHER COLORS

Colour		Ref.	Cod.
White		-	52
Blue		-	53
Blue		pant. 645 U	54
Blue		pant. 300	55
Grey		-	57
Grey		-	59
Grey		NCS 7500	60
Red		-	64
Red		-	65
Natural		-	66
Green		-	70
Brown		-	71
Cream		-	72
Violet		-	73

ROLLMEX OY

TAMPERE

Takojankatu 4 - 33540 TAMPERE

Puh. 010-6661122

tampere@rollmex.fi

LAHTI

Karjalankatu 21 - 15140 LAHTI

Puh. 010-6661121

lahti@rollmex.fi

WWW.ROLLMEX.FI

 **ROLLMEX**