

W(PS) – FAMILY BALL PLUNGERS AND PLUNGERS



 **ROLLMEX**

ART. W830 – W831

STEEL BALL PLUNGER WITH SLOTTED END

MATERIAL:

Black-oxide treated automatic steel ball plunger body.

BALL:

Hardened ball-bearing steel ball.

SPRING:

Stainless steel spring (AISI 303).

THRUST TYPE:

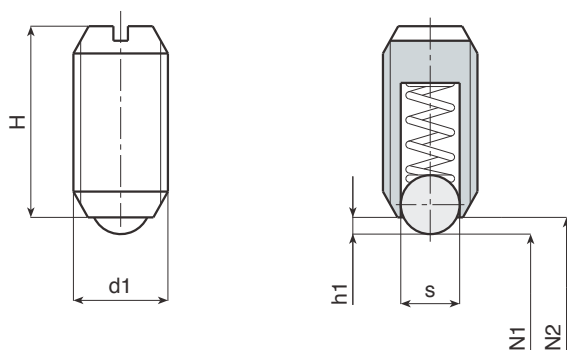
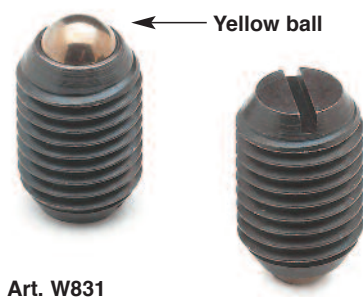
W830: Normal.

W831: Stronger (note the yellow ball).

Packs containing 10 pieces.

SPECIAL REQUEST:

- On request the ball plungers can be supplied with self-locking thread, through the application of a layer of polyamide (blue band).
- On request M3 diameters are available in the W830 version, and M24 in the W830 and W831 versions.



W830 CIN version normal thrust (thrust values in position N1 and N2)

Art.	s	H	h1	N1 (Newton)	N2 (Newton)	d1	Weight (gr)
W830-M4	2,5	9	0,8	8,5	14	M04	0,4
W830-M5	3	12	0,9	8	14	M05	0,9
W830-M6	3,5	14	1	11	18	M06	1,5
W830-M8	4,5	16	1,5	18	31	M08	3,5
W830-M10	6	19	2	24	45	M10	6,5
W830-M12	8	22	2,5	26	49	M12	10
W830-M16	10	24	3,5	41	86	M16	24
W830-M20	12	30	4,5	56	111	M20	43

W831 CIN version STRONGER thrust (thrust values in position N1 and N2)

Art.	s	H	h1	N1 (Newton)	N2 (Newton)	d1	Weight (gr)
W831-M5	3	12	0,9	15	22	M05	0,9
W831-M6	3,5	14	1	19	28	M06	1,5
W831-M8	4,5	16	1,5	36	62	M08	3,5
W831-M10	6	19	2	57	104	M10	6,5
W831-M12	8	22	2,5	61	110	M12	10
W831-M16	10	24	3,5	68	142	M16	24
W831-M20	12	30	4,5	84	166	M20	43

ART. W830 CIN – W831 CIN

STAINLESS STEEL BALL PLUNGER WITH SLOTTED END

INOX

MATERIAL:

Stainless steel ball plunger body (AISI 303).

BALL:

Hardened stainless steel ball.

SPRING:

Stainless steel spring (AISI 303).

THRUST TYPE:

W830 CIN: Normal.

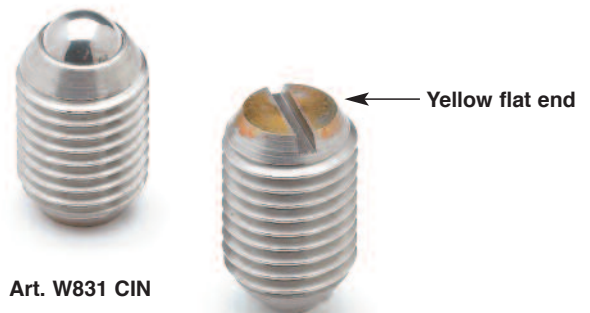
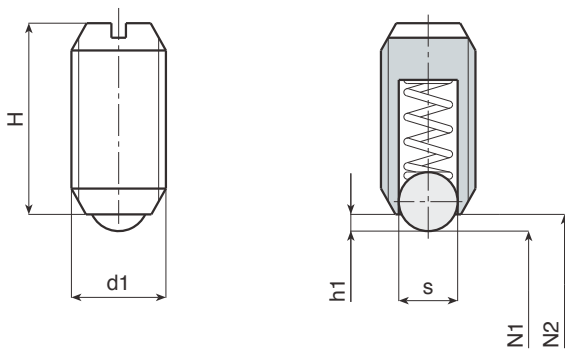
W831 CIN: Stronger (note the yellow flat end).

Packs containing 10 pieces.



SPECIAL REQUEST:

- On request the ball plungers can be supplied with self-locking thread, through the application of a layer of polyamide (blue band).
- On request M3 diameters are available in the W830 CIN version, and M24 in the W830 CIN and W831 CIN versions.



W830 CIN version normal thrust (thrust values in position N1 and N2)

Art.	s	H	h1	N1 (Newton)	N2 (Newton)	d1	Weight (gr)
W830-M4 CIN	2,5	9	0,8	8,5	14	M04	0,4
W830-M5 CIN	3	12	0,9	8	14	M05	0,9
W830-M6 CIN	3,5	14	1	11	18	M06	1,5
W830-M8 CIN	4,5	16	1,5	18	31	M08	3,5
W830-M10 CIN	6	19	2	24	45	M10	6,5
W830-M12 CIN	8	22	2,5	26	49	M12	10
W830-M16 CIN	10	24	3,5	41	86	M16	24
W830-M20 CIN	12	30	4,5	56	111	M20	43

W831 CIN version STRONGER thrust (thrust values in position N1 and N2)

Art.	s	H	h1	N1 (Newton)	N2 (Newton)	d1	Weight (gr)
W831-M5 CIN	3	12	0,9	15	22	M05	0,9
W831-M6 CIN	3,5	14	1	19	28	M06	1,5
W831-M8 CIN	4,5	16	1,5	36	62	M08	3,5
W831-M10 CIN	6	19	2	57	104	M10	6,5
W831-M12 CIN	8	22	2,5	61	110	M12	10
W831-M16 CIN	10	24	3,5	68	142	M16	24
W831-M20 CIN	12	30	4,5	84	166	M20	43

ART. W832 – W833

STEEL SPRING PLUNGER WITH SLOTTED END AND NOSE PIN

MATERIAL:

Black-oxide treated automatic steel nose pin
plunger body.

NOSE PIN:

Hardened steel turned nose pin.

SPRING:

Stainless steel spring (AISI 303).

THRUST TYPE:

W832: Normal.

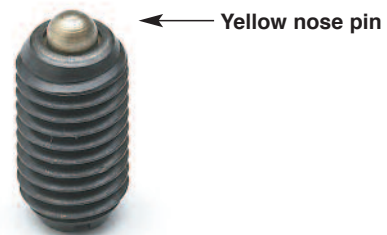
W833: Stronger (note the yellow nose pin).

Packs containing 10 pieces.

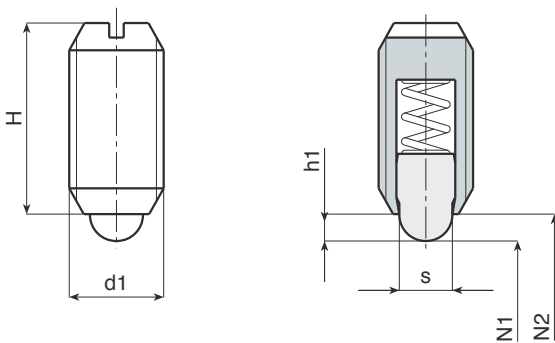


SPECIAL REQUEST:

- On request the nose pin plungers can be supplied with self-locking thread, through the application of a layer of polyamide (blue band).
- On request M4 diameters are available in the W832 version, and M24 in the W832 e W833 versions.



Art. W833



W832 version normal thrust (thrust values in position N1 and N2)

Art.	s	H	h1	N1 (Newton)	N2 (Newton)	d1	Weight (gr)
W832.VBM05	2,4	12	2	5	13	M05	0,9
W832.VBM06	2,7	14	2	6	17	M06	1,5
W832.VBM08	3,8	16	2	16	33	M08	3,5
W832.VBM10	4,5	19	2,5	19	42	M10	6,5
W832.VBM12	6,2	22	3,5	22	57	M12	40
W832.VBM16	8,5	24	4,5	38	78	M16	24
W832.VBM20	10	30	6,5	39	81	M20	43

W833 version STRONGER thrust (thrust values in position N1 and N2)

Art.	s	H	h1	N1 (Newton)	N2 (Newton)	d1	Weight (gr)
W833.VBM06	2,7	14	2	11	25	M06	1,5
W833.VBM08	3,8	16	2	20	54	M08	3,5
W833.VBM10	4,5	19	2,5	23	59	M10	6,5
W833.VBM12	6,2	22	3,5	38	96	M12	40
W833.VBM16	8,5	24	4,5	50	100	M16	24
W833.VBM20	10	30	6,5	52	133	M20	43

ART. W832 CIN – W833 CIN

STAINLESS STEEL SPRING PLUNGER WITH SLOTTED END AND NOSE PIN

MATERIAL:

Stainless steel nose pin plunger body (AISI 303).



NOSE PIN:

Turned stainless steel nose pin.

SPRING:

Stainless steel spring (AISI 303).

THRUST TYPE:

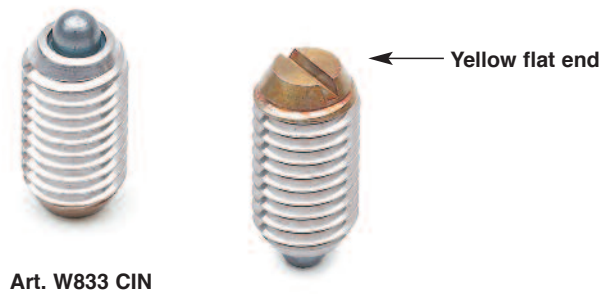
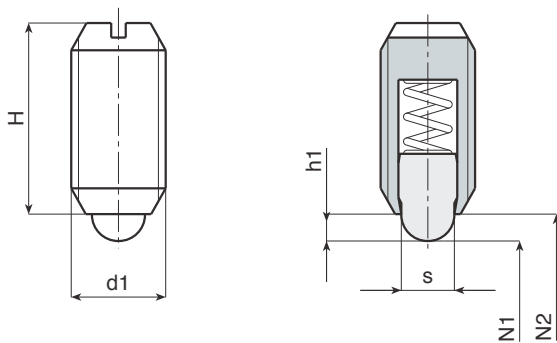
W832 CIN: Normal.

W833 CIN: Stronger (note the yellow flat end).

Packs containing 10 pieces.

SPECIAL REQUEST:

- On request the nose pin plungers can be supplied with self-locking thread, through the application of a layer of polyamide (blue band).
- On request M4 diameters are available in the W832 CIN version, and M24 in the W832 CIN e W833 CIN versions.



Art. W833 CIN

W832 CIN version normal thrust (thrust values in position N1 and N2)

Art.	s	H	h1	N1 (Newton)	N2 (Newton)	d1	Weight (gr)
W832.INM05	2,4	12	2	5	13	M05	0,9
W832.INM06	2,7	14	2	6	17	M06	1,5
W832.INM08	3,8	16	2	16	33	M08	3,5
W832.INM10	4,5	19	2,5	19	42	M10	6,5
W832.INM12	6,2	22	3,5	22	57	M12	40
W832.INM16	8,5	24	4,5	38	78	M16	24
W832.INM20	10	30	6,5	39	81	M20	43

W833 CIN version STRONGER thrust (thrust values in position N1 and N2)

Art.	s	H	h1	N1 (Newton)	N2 (Newton)	d1	Weight (gr)
W833.INM06	2,7	14	2	11	25	M06	1,5
W833.INM08	3,8	16	2	20	54	M08	3,5
W833.INM10	4,5	19	2,5	23	59	M10	6,5
W833.INM12	6,2	22	3,5	38	96	M12	40
W833.INM16	8,5	24	4,5	50	100	M16	24
W833.INM20	10	30	6,5	52	133	M20	43

ART. W834 – W835

STEEL BALL PLUNGER WITH HEXAGON SOCKET END

MATERIAL:

Black-oxide treated automatic steel ball plunger body.

BALL:

Hardened ball-bearing steel ball.

SPRING:

Stainless steel spring (AISI 303).

THRUST TYPE:

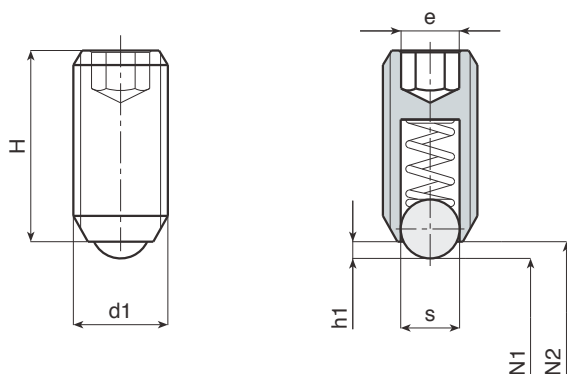
W834: Normal.

W835: Stronger (note the yellow ball).

Packs containing 10 pieces.

SPECIAL REQUEST:

- On request the ball plungers can be supplied with self-locking thread, through the application of a layer of polyamide (blue band).
- On request M3 diameters are available in the W834 version, and M24 in the W834 and W835 versions.



W834 version normal thrust (thrust values in position N1 and N2)

Art.	s	H	h1	e	N1 (Newton)	N2 (Newton)	d1	Weight (gr)
W834-M4	2,5	9	0,8	2	8,5	14	M04	0,4
W834-M5	3	12	0,9	2,5	8	14	M05	0,9
W834-M6	3,5	14	1	3	11	18	M06	1,5
W834-M8	4,5	16	1,5	4	18	31	M08	3,5
W834-M10	6	19	2	5	24	45	M10	6,5
W834-M12	8	22	2,5	6	26	49	M12	10
W834-M16	10	24	3,5	8	41	86	M16	24
W834-M20	12	30	4,5	10	56	111	M20	43

W835 version STRONGER thrust (thrust values in position N1 and N2)

Art.	s	H	h1	e	N1 (Newton)	N2 (Newton)	d1	Weight (gr)
W835-M5	3	12	0,9	2,5	15	22	M05	0,9
W835-M6	3,5	14	1	3	19	28	M06	1,5
W835-M8	4,5	16	1,5	4	36	62	M08	3,5
W835-M10	6	19	2	5	57	104	M10	6,5
W835-M12	8	22	2,5	6	61	110	M12	10
W835-M16	10	24	3,5	8	68	142	M16	24
W835-M20	12	30	4,5	10	84	166	M20	43

ART. W834 CIN – W835 CIN

STAINLESS STEEL BALL PLUNGER WITH HEXAGON SOCKET END

INOX

MATERIAL:

Stainless steel ball plunger body (AISI 303).

BALL:

Hardened stainless steel ball.

SPRING:

Stainless steel spring (AISI 303).

THRUST TYPE:

W834 CIN: Normal.

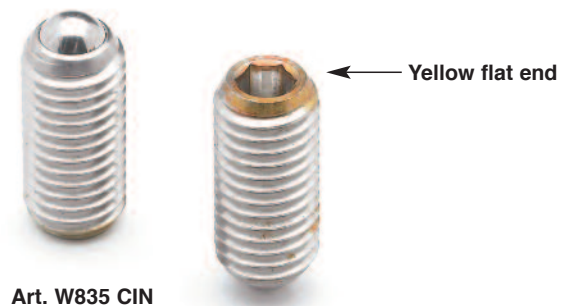
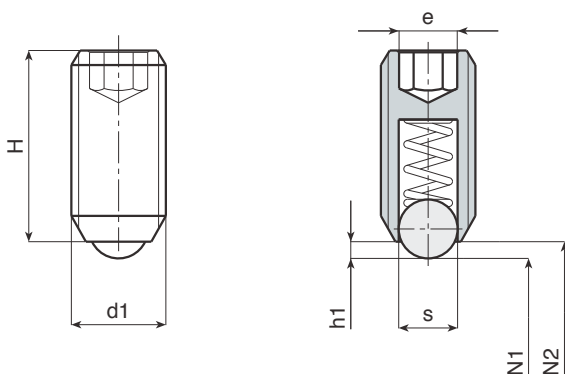
W835 CIN: Stronger (note the yellow flat end).

Packs containing 10 pieces.



SPECIAL REQUEST:

- On request the ball plungers can be supplied with self-locking thread, through the application of a layer of polyamide (blue band).
- On request M3 diameters are available in the W834 CIN version, and M24 in the W834 CIN and W835 CIN versions.



W834 CIN version normal thrust (thrust values in position N1 and N2)

Art.	s	H	h1	e	N1 (Newton)	N2 (Newton)	d1	Weight (gr)
W834-M4 CIN	2,5	9	0,8	2	8,5	14	M04	0,4
W834-M5 CIN	3	12	0,9	2,5	8	14	M05	0,9
W834-M6 CIN	3,5	14	1	3	11	18	M06	1,5
W834-M8 CIN	4,5	16	1,5	4	18	31	M08	3,5
W834-M10 CIN	6	19	2	5	24	45	M10	6,5
W834-M12 CIN	8	22	2,5	6	26	49	M12	10
W834-M16 CIN	10	24	3,5	8	41	86	M16	24
W834-M20 CIN	12	30	4,5	10	56	111	M20	43

W835 CIN version STRONGER thrust (thrust values in position N1 and N2)

Art.	s	H	h1	e	N1 (Newton)	N2 (Newton)	d1	Weight (gr)
W835-M5 CIN	3	12	0,9	2,5	15	22	M05	0,9
W835-M6 CIN	3,5	14	1	3	19	28	M06	1,5
W835-M8 CIN	4,5	16	1,5	4	36	62	M08	3,5
W835-M10 CIN	6	19	2	5	57	104	M10	6,5
W835-M12 CIN	8	22	2,5	6	61	110	M12	10
W835-M16 CIN	10	24	3,5	8	68	142	M16	24
W835-M20 CIN	12	30	4,5	10	84	166	M20	43

ART. W836

BLACK OXIDE TREATED STEEL SPRING PLUNGER WITH HEXAGON SOCKET END AND NOSE PIN

MATERIAL:

Black-oxide treated automatic steel nose pin plunger body.

NOSE PIN:

Hardened steel turned nose pin.

SPRING:

Stainless steel spring (AISI 303).

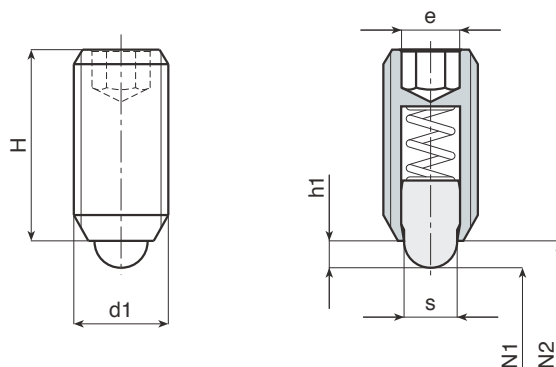
THRUST TYPE:

W836: Normal.

Packs containing 10 pieces.

SPECIAL REQUEST:

- On request the nose pin plungers can be supplied with self-locking thread, through the application of a layer of polyamide (blue band).
- On request M3 and M24 diameters are available.



W836 version normal thrust (thrust values in position N1 and N2)

Art.	s	H	h1	e	N1 (Newton)	N2 (Newton)	d1	Weight (gr)
W836.VBM05	2,4	14	2	2,5	5	13	M05	1,1
W836.VBM06	2,7	15	2	3	6	17	M06	2
W836.VBM08	3,8	18	2	4	16	33	M08	4
W836.VBM10	4,5	23	2,5	5	19	42	M10	8
W836.VBM12	6,2	26	3,5	6	22	57	M12	12
W836.VBM16	8,5	33	4,5	8	38	78	M16	31
W836.VBM20	10	43	6,5	10	39	81	M20	64

ART. W836 CIN

STAINLESS STEEL SPRING PLUNGER WITH HEXAGON SOCKET END AND NOSE PIN

MATERIAL:

Stainless steel nose pin plunger body (AISI 303).



NOSE PIN:

Turned stainless steel nose pin.

SPRING:

Stainless steel spring (AISI 303).

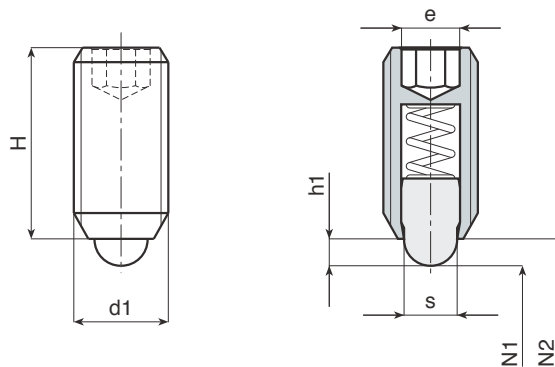
THRUST TYPE:

W836 CIN: Normal.

Packs containing 10 pieces.

SPECIAL REQUEST:

- On request the nose pin plungers can be supplied with self-locking thread, through the application of a layer of polyamide (blue band).
- On request M4 and M24 diameters are available.



W836 CIN version normal thrust (thrust values in position N1 and N2)

Art.	s	H	h1	e	N1 (Newton)	N2 (Newton)	d1	Weight (gr)
W836.INM05	2,4	14	2	2,5	5	13	M05	1,1
W836.INM06	2,7	15	2	3	6	17	M06	2
W836.INM08	3,8	18	2	4	16	33	M08	4
W836.INM10	4,5	23	2,5	5	19	42	M10	8
W836.INM12	6,2	26	3,5	6	22	57	M12	12
W836.INM16	8,5	33	4,5	8	38	78	M16	31
W836.INM20	10	43	6,5	10	39	81	M20	64

ART. W840

BLACK OXIDE TREATED STEEL SPRING PLUNGER WITH GRUB SCREW AND NOSE PIN

MATERIAL:

Black-oxide treated automatic steel nose pin plunger body.

NOSE PIN:

(1) Hardened steel turned nose pin.

SPRING:

(3) Stainless steel spring (AISI 303).

GRUB SCREW:

(2) Black-oxide treated grub screw with hexagon socket end (note the grub screw is glued in place).

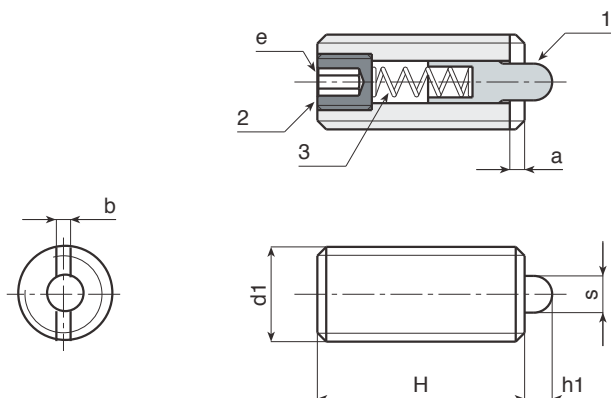
THRUST TYPE:

Normal.

Packs containing 10 pieces.

SPECIAL REQUEST:

- On request M4 and M24 diameters are available.
- On request the grub screws can be supplied with stronger spring (W841).



W840 version normal thrust (thrust values in position N1 and N2)

Art.	s	H	h1	e	a	b	N1 (Newton)	N2 (Newton)	d1	Weight (gr)
W840.VBM04	1,5	15	1,5	1,3	0,6	0,6	4,5	16	M04	0,8
W840.VBM05	2,4	18	2,3	1,5	1,2	0,8	6	19	M05	1,6
W840.VBM06	2,7	20	2,5	2	1,3	0,9	6	19	M06	2,5
W840.VBM08	3,5	22	3	2,5	1,5	1,4	10	39	M08	6
W840.VBM10	4	22	3	3	1,5	1,4	10	39	M10	9
W840.VBM12	6	28	4	4	2,7	2	12	53	M12	16

ART. W840 CIN

STAINLESS STEEL SPRING PLUNGER WITH GRUB SCREW AND NOSE PIN

INOX

MATERIAL:

Stainless steel nose pin plunger body (AISI 303).

NOSE PIN:

(1) Turned stainless steel nose pin.

SPRING:

(3) Stainless steel spring (AISI 303).

GRUB SCREW:

(2) Stainless steel grub screw with hexagon socket end (note the grub screw is glued in place).

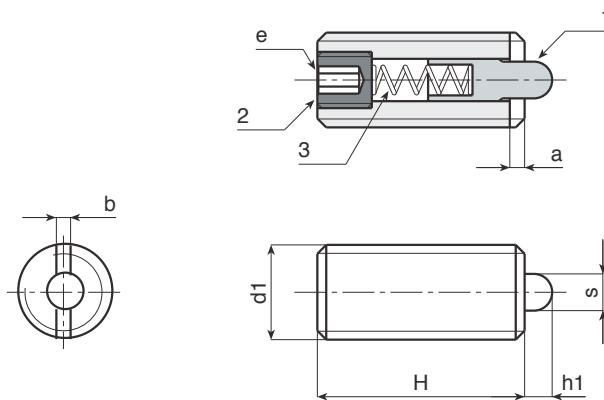
THRUST TYPE:

Normal.

Packs containing 10 pieces.

SPECIAL REQUEST:

- On request M4 and M20 diameters are available.



W840 CIN version normal thrust (thrust values in position N1 and N2)

Art.	s	H	h1	e	a	b	N1 (Newton)	N2 (Newton)	d1	Weight (gr)
W840.INM05	2,4	18	2,3	1,5	1,2	0,8	6	19	M05	1,6
W840.INM06	2,7	20	2,5	2	1,3	0,9	6	19	M06	2,5
W840.INM08	3,5	22	3	2,5	1,5	1,4	10	39	M08	6
W840.INM10	4	22	3	3	1,5	1,4	10	39	M10	9
W840.INM12	6	28	4	4	2,7	2	12	53	M12	16
W840.INM16	7,5	32	5	5	3,2	2,5	45	100	M16	35

STAINLESS STEEL UNTHREADED BALL PLUNGER

INOX

MATERIAL:

Stainless steel sheet ball plunger body (AISI 303).

BALL:

Hardened stainless steel ball.

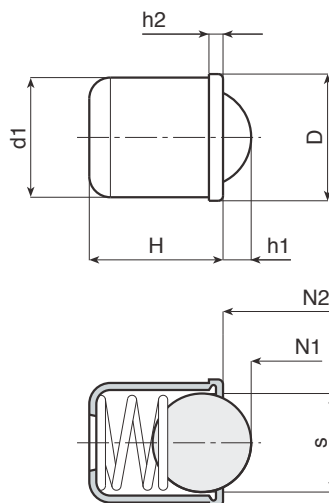
SPRING:

Stainless steel spring (AISI 303).

Packs containing 10 pieces.

SPECIAL REQUEST:

- None.



Art.	s	H	h1	h2	D	N1 (Newton)	N2 (Newton)	d1 ^{-0.02} / _{-0.04}	Weight (gr)
W850.IND04	3	5	1	0,9	4,6	2,5	6	D 05	0,4
W850.IND05	4	6	1,4	0,9	5,6	3	6,5	D 06	0,6
W850.IND06	5	7	1,8	1	6,5	5,5	11,5	D 08	1
W850.IND08	6,5	9	2,4	1,1	8,5	7	12,5	D 10	2,2
W850.IND10	8,5	13	3,3	1,7	11	8,5	18,5	D 12	4
W850.IND12	10	16	4	2,3	13	12	26,5	D 16	7,8

ART. W806

WELDABLE BLACK OXIDE TREATED STEEL KNOB STYLE INDEXING PLUNGER WITH UNTHREADED PIN

MATERIAL:

(4) Reinforced polyamide scallop knob. Fixed.

INSERTS:

- (3) Zinc plated steel spring.
- (2) Bored unthreaded, welding quality steel body.
- (1) Hardened high resistance steel plunger pin.

ATTENTION: The manufacturer recommends making the hole for the plunger pin with a tolerance of H7.

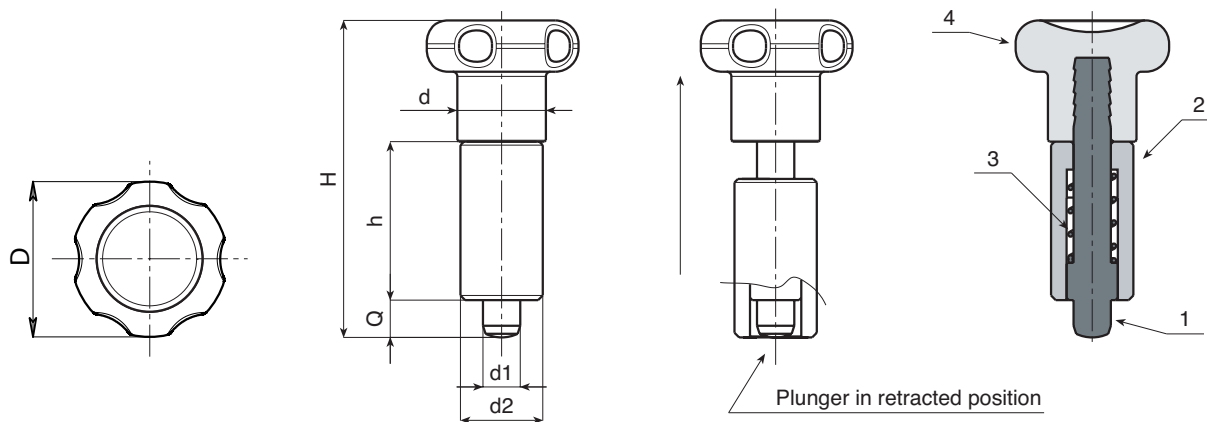
SURFACES:

- (4) Black satin finish (RAL 9011).
- (1,2) Black-oxide finish.

Packs containing 10 pieces.

SPECIAL REQUESTS:

- On request and for special quantities the knob is available in a choice of colours as indicated in the table on page 23.



Art.	D	H	h	d2	d	d1 ^{-0,02 -0,04}	Q	Weight (gr)
W806-5	22	45	22	12	12	05	5	23
W806-6	27	54	26	14	14	06	6	40
W806-8	33	68	34	18	19	08	8	84

W800 SERIES

KNOB STYLE – BLACK OXIDE TREATED AND STAINLESS STEEL – INDEXING PLUNGER WITH OR WITHOUT LOCK NUT



Art. W800 CIN

W800 Version Knob-style black oxide treated indexing plunger

Art.	D	H	h	h1	d2	d	e	s	d1 ^{-0.02 -0.04}	Q	Weight (gr)
W800-5	22	45	17	15	M10x1	12	12	5	05	5	18
W800-6	27	54	20	18	M12x1,5	14	14	6	06	6	31
W800-8	33	68	26	24	M16x1,5	19	19	8	08	8	71
W800-10	33	79	33	31	M20x1,5	19	22	10	10	10	123

W801 Version Knob-style black oxide treated indexing plunger with lock nut

Art.	D	H	h	h1	d2	d	e	s	e2	s2	d1 ^{-0.02 -0.04}	Q	Weight (gr)
W801-5	22	45	17	15	M10x1	12	12	5	17	6	05	5	25
W801-6	27	54	20	18	M12x1,5	14	14	6	19	7	06	6	41
W801-8	33	68	26	24	M16x1,5	19	19	8	24	8	08	8	89
W801-10	33	79	33	31	M20x1,5	19	22	10	30	9	10	10	153

W800 CIN Version Knob-style stainless steel indexing plunger

Art.	D	H	h	h1	d2	d	e	s	d1 ^{-0.02 -0.04}	Q	Weight (gr)
W800-5 CIN	22	45	17	15	M10x1	12	12	5	05	5	18
W800-6 CIN	27	54	20	18	M12x1,5	14	14	6	06	6	31
W800-8 CIN	33	68	26	24	M16x1,5	19	19	8	08	8	71
W800-10 CIN	33	79	33	31	M20x1,5	19	22	10	10	10	123

W801 CIN Version Knob-style stainless steel indexing plunger with lock nut

Art.	D	H	h	h1	d2	d	e	s	e2	s2	d1 ^{-0.02 -0.04}	Q	Weight (gr)
W801-5 CIN	22	45	17	15	M10x1	12	12	5	17	6	05	5	25
W801-6 CIN	27	54	20	18	M12x1,5	14	14	6	19	7	06	6	41
W801-8 CIN	33	68	26	24	M16x1,5	19	19	8	24	8	08	8	89
W801-10 CIN	33	79	33	31	M20x1,5	19	22	10	30	9	10	10	153

VERSIONS:

- W800** Knob-style black oxide treated indexing plunger.
- W801** Knob-style black oxide treated indexing plunger with lock nut.
- W800 CIN** Knob-style stainless steel indexing plunger.
- W801 CIN** Knob-style stainless steel indexing plunger with lock nut.

MATERIAL:

(4) Reinforced polyamide scallop knob. Fixed.

VERSIONS W800 AND W801

- (3) Zinc plated steel spring.
- (2) High-resistance steel threaded hexagon ring nut.
- (1) Hardened high resistance steel plunger pin.
- (5) Threaded steel lock nut (UNI 5589).

VERSIONS W800 CIN E W801 CIN

- (3) Stainless steel spring (AISI 303).
- (2) Stainless steel threaded hexagon ring nut. (AISI 303).
- (1) Stainless steel plunger pin (AISI 303).
- (5) Threaded stainless steel lock nut (AISI 304) (UNI 5589).

ATTENTION: The manufacturer recommends making the hole for the plunger pin with a tolerance of H7.

ATTENTION: Nut supplied assembled (for version W801 and W801 CIN).

SURFACES:

(4) Black satin finish (RAL 9011).

VERSIONS W800 AND W801

(1,2,5) Black-oxide finish.

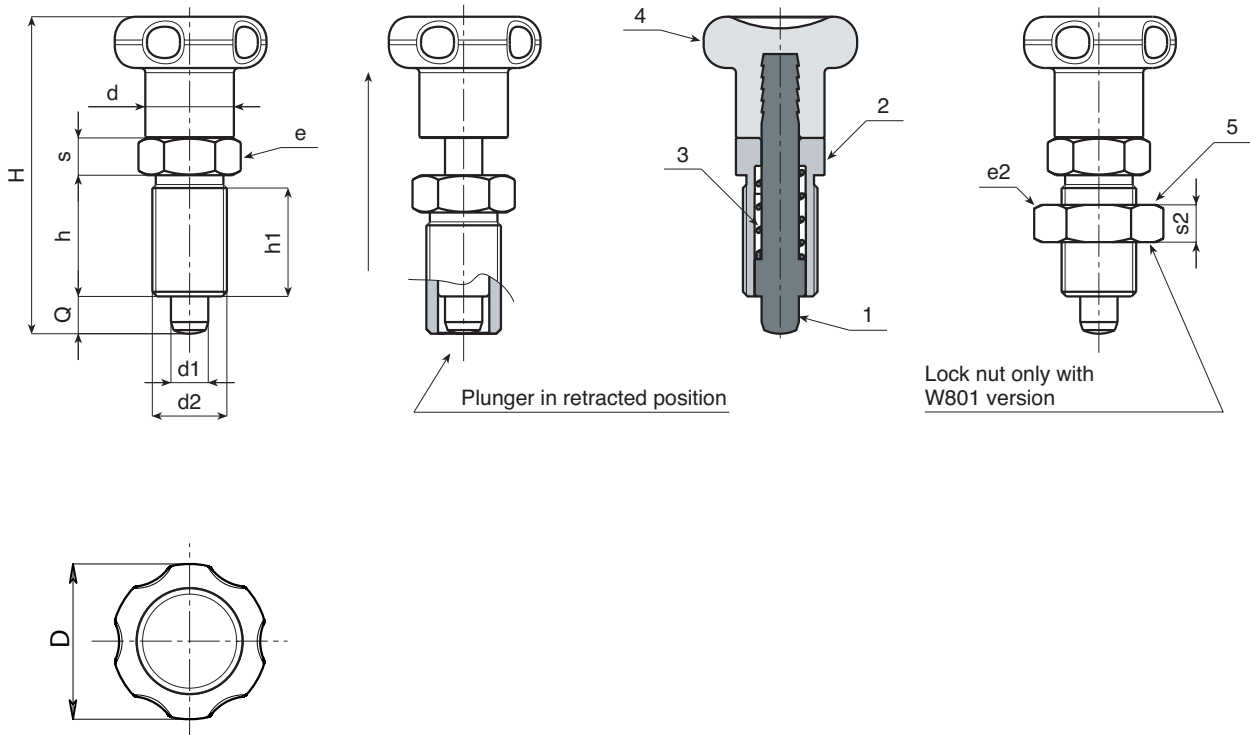
VERSIONS W800 CIN AND W801 CIN

(1,2,5) Natural.

Packs containing 10 pieces.

SPECIAL REQUESTS:

- On request and for special quantities the knob is available in a choice of colours as indicated in the table on page 23.
- On request the nut can be supplied separate.



W810 SERIES

KNOB STYLE – BLACK OXIDE TREATED AND STAINLESS STEEL – INDEXING PLUNGER WITH HANDWHEEL LOCKING SYSTEM, WITH OR WITHOUT LOCK NUT



Art. W810 CIN

W810 Version Knob-style black oxide treated indexing plunger with handwheel locking system

Art.	D	H	h	h1	h3	d3	d2	d	e	s	d1 ^{-0,02 -0,04}	Q	Weight (gr)
W810-5	22	51,5	17	15	6,5	11,8	M10x1	12	12	5	05	5	22
W810-6	27	61,5	20	18	7,5	13,8	M12x1,5	14	14	6	06	6	37
W810-8	33	77,5	26	24	9,5	18,8	M16x1,5	19	19	8	08	8	87
W810-10	33	90,5	33	31	11,5	18,8	M20x1,5	19	22	10	10	10	142

W811 Version Knob-style black oxide treated indexing plunger with handwheel locking system and lock nut

Art.	D	H	h	h1	h3	d3	d2	d	e	s	e2	s2	d1 ^{-0,02 -0,04}	Q	Weight (gr)
W811-5	22	51,5	17	15	6,5	11,8	M10x1	12	12	5	17	6	05	5	29
W811-6	27	61,5	20	18	7,5	13,8	M12x1,5	14	14	6	19	7	06	6	47
W811-8	33	77,5	26	24	9,5	18,8	M16x1,5	19	19	8	24	8	08	8	105
W811-10	33	90,5	33	31	11,5	18,8	M20x1,5	19	22	10	30	9	10	10	172

W810 CIN Version Knob-style stainless steel indexing plunger with handwheel locking system

Art.	D	H	h	h1	h3	d3	d2	d	e	s	d1 ^{-0,02 -0,04}	Q	Weight (gr)
W810-5 CIN	22	51,5	17	15	6,5	11,8	M10x1	12	12	5	05	5	22
W810-6 CIN	27	61,5	20	18	7,5	13,8	M12x1,5	14	14	6	06	6	37
W810-8 CIN	33	77,5	26	24	9,5	18,8	M16x1,5	19	19	8	08	8	87
W810-10 CIN	33	90,5	33	31	11,5	18,8	M20x1,5	19	22	10	10	10	142

W811 CIN Version Knob-style stainless steel indexing plunger with handwheel locking system and lock nut

Art.	D	H	h	h1	h3	d3	d2	d	e	s	e2	s2	d1 ^{-0,02 -0,04}	Q	Weight (gr)
W811-5 CIN	22	51,5	17	15	6,5	11,8	M10x1	12	12	5	17	6	05	5	29
W811-6 CIN	27	61,5	20	18	7,5	13,8	M12x1,5	14	14	6	19	7	06	6	47
W811-8 CIN	33	77,5	26	24	9,5	18,8	M16x1,5	19	19	8	24	8	08	8	105
W811-10 CIN	33	90,5	33	31	11,5	18,8	M20x1,5	19	22	10	30	9	10	10	172

VERSIONS:

- W810** Knob-style black oxide treated indexing plunger with handwheel locking system.
- W811** Knob-style black oxide treated indexing plunger with handwheel locking system and lock nut.
- W810 CIN** Knob-style stainless steel indexing plunger with handwheel locking system.
- W811 CIN** Knob-style stainless steel indexing plunger with handwheel locking system and lock nut.

MATERIAL:

(4) Reinforced polyamide scallop knob. Fixed.

VERSIONS W810 AND W811

- (3) Zinc plated steel spring.
- (2) High-resistance steel threaded hexagon ring nut.
- (1) Hardened high resistance steel plunger pin.
- (5) Threaded steel lock nut (UNI 5589).

VERSIONS W810 CIN AND W811 CIN

- (3) Stainless steel spring (AISI 303).
- (2) Stainless steel threaded hexagon ring nut. (AISI 303).
- (1) Stainless steel plunger pin (AISI 303).
- (5) Threaded stainless steel lock nut (AISI 304) (UNI 5589).

ATTENTION: The manufacturer recommends making the hole for the plunger pin with a tolerance of H7.

ATTENTION: Nut supplied assembled (for version W811 and W811 CIN).

SURFACES:

(4) Black satin finish (RAL 9011).

VERSIONS W810 AND W811

(1,2,5) Black-oxide finish.

VERSIONS W810 CIN AND W811 CIN

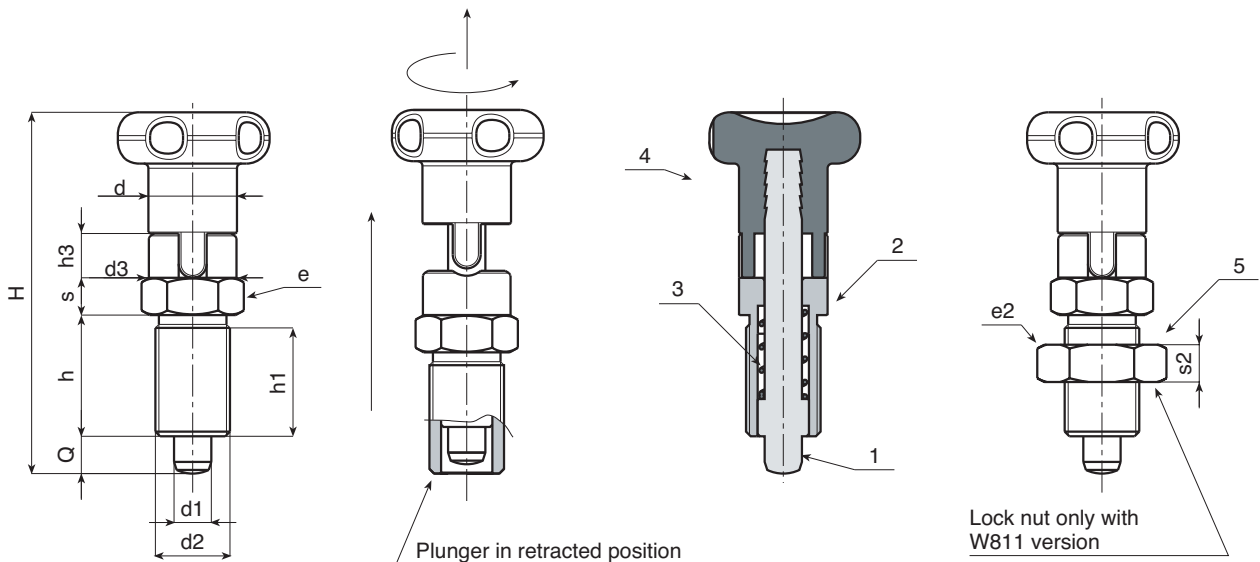
(1,2,5) Natural.

Packs containing 10 pieces.

SPECIAL REQUESTS:

- On request and for special quantities the knob is available in a choice of colours as indicated in the table on page 23.
- On request the nut can be supplied separate.

To lock the plunger in the retracted position, lift the knob and rotate by 90° until it clicks into the slot.



W802 SERIES

BLACK OXIDE TREATED AND STAINLESS STEEL THREADED PLUNGER WITH OR WITHOUT LOCK NUT



Art. W802 CIN

W802 Version Black oxide treated indexing plunger

Art.	H	h	h1	d2	d3	h3	e	s	d1 ^{-0.02 -0.04}	Q	Weight (gr)
W802-5	45	17	15	M10x1	M4	6	12	5	05	5	13
W802-6	54	20	18	M12x1,5	M5	10	14	6	06	6	22
W802-8	68	26	24	M16x1,5	M8	12	19	8	08	8	54
W802-10	79	33	31	M20x1,5	M10	12	22	10	10	10	104

W803 Version Black oxide treated indexing plunger with lock nut

Art.	H	h	h1	d2	d3	h3	e	s	e2	s2	d1 ^{-0.02 -0.04}	Q	Weight (gr)
W803-5	45	17	15	M10x1	M4	6	12	5	17	6	05	5	20
W803-6	54	20	18	M12x1,5	M5	10	14	6	19	7	06	6	32
W803-8	68	26	24	M16x1,5	M8	12	19	8	24	8	08	8	62
W803-10	79	33	31	M20x1,5	M10	12	22	10	30	9	10	10	134

W802 CIN Version Stainless steel indexing plunger

Art.	H	h	h1	d2	d3	h3	e	s	d1 ^{-0.02 -0.04}	Q	Weight (gr)
W802-5 CIN	45	17	15	M10x1	M4	6	12	5	05	5	13
W802-6 CIN	54	20	18	M12x1,5	M5	10	14	6	06	6	22
W802-8 CIN	68	26	24	M16x1,5	M8	12	19	8	08	8	54
W802-10 CIN	79	33	31	M20x1,5	M10	12	22	10	10	10	104

W803 CIN Version Stainless steel indexing plunger with lock nut

Art.	H	h	h1	d2	d3	h3	e	s	e2	s2	d1 ^{-0.02 -0.04}	Q	Weight (gr)
W803-5 CIN	45	17	15	M10x1	M4	6	12	5	17	6	05	5	20
W803-6 CIN	54	20	18	M12x1,5	M5	10	14	6	19	7	06	6	32
W803-8 CIN	68	26	24	M16x1,5	M8	12	19	8	24	8	08	8	62
W803-10 CIN	79	33	31	M20x1,5	M10	12	22	10	30	9	10	10	134

VERSIONS:

- W802** Black-oxide treated indexing plunger.
- W803** Black-oxide treated indexing plunger with lock nut.
- W802 CIN** Stainless steel treated indexing plunger.
- W803 CIN** Stainless steel treated indexing plunger with lock nut.

MATERIAL:

VERSIONS W802 AND W803

- (3) Zinc plated steel spring.
- (2) High-resistance steel threaded hexagon ring nut.
- (1) Hardened high resistance steel plunger pin.
- (4) Threaded steel lock nut (UNI 5589).

VERSIONS W802 CIN AND W803 CIN

- (3) Stainless steel spring (AISI 303).
- (2) Stainless steel threaded hexagon ring nut. (AISI 303).
- (1) Stainless steel plunger pin (AISI 303).
- (4) Threaded stainless steel lock nut (AISI 304) (UNI 5589).

ATTENTION: The manufacturer recommends making the hole for the plunger pin with a tolerance of H7.

ATTENTION: Nut supplied assembled (for version W803 and W803 CIN).

SURFACES:

VERSIONS W802 AND W803

(1,2,4) Black-oxide finish.

VERSIONS W802 CIN AND W803 CIN

(1,2,4) Natural.

Packs containing 10 pieces.

SPECIAL REQUESTS:

- On request the nut can be supplied separate.

N.B.: THIS VERSION OF PLUNGER CAN BE COMBINED WITH ANY HANDWHEEL WITH THREADED INSERT ORDER SEPARATELY (see photos below)



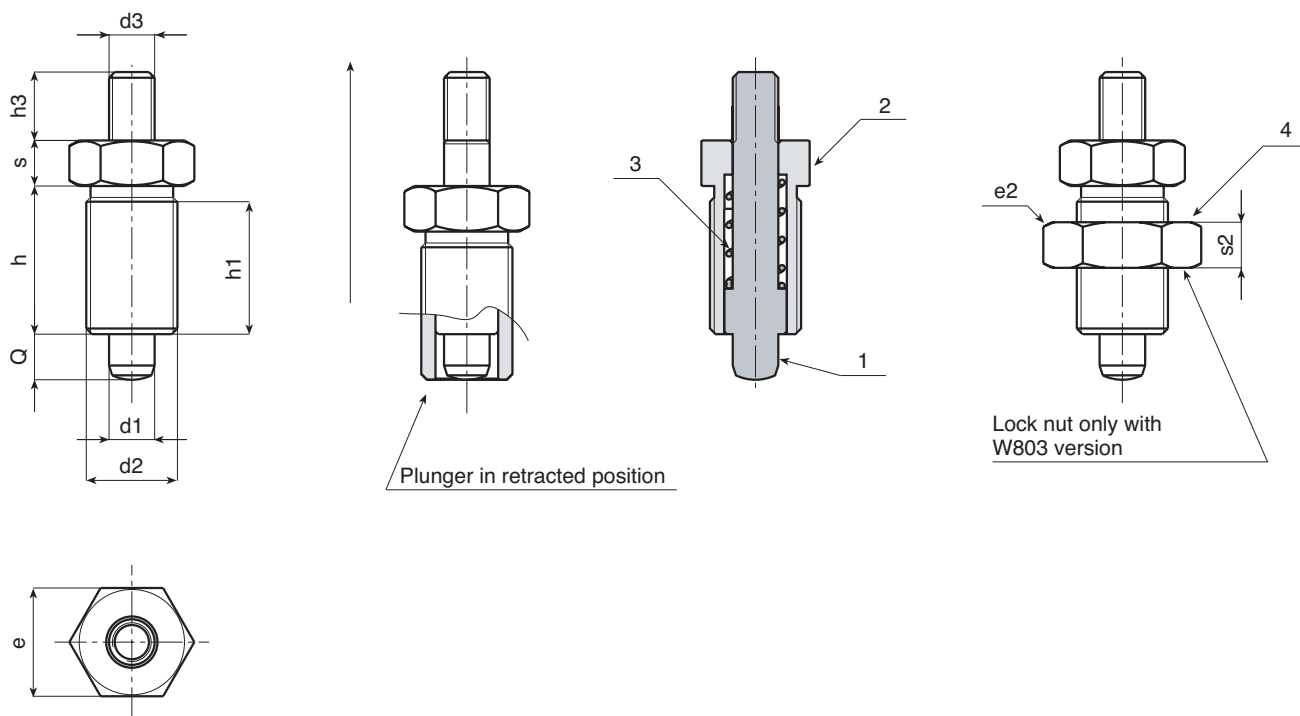
Art. W802 + H767



Art. W802 + F186

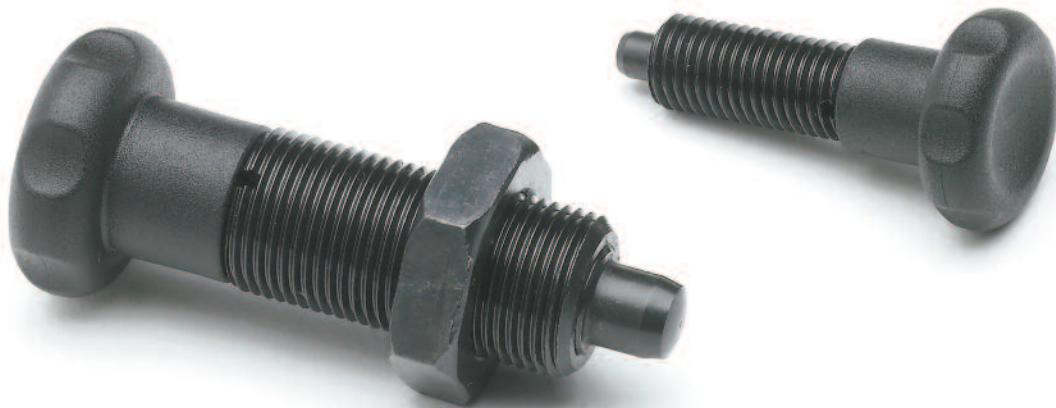


Art. W803 + G730



ART. W804 – W805

KNOB STYLE BLACK OXIDE TREATED INDEXING PLUNGER WITHOUT RING NUT – WITH OR WITHOUT LOCK NUT



W804 Version Knob-style black oxide treated indexing plunger without ring nut.

Art.	D	H	h	d2	d	d1 ^{-0,02 -0,04}	Q	Weight (gr)	WRENCH
W804-5	22	45	22	M10x1	12	05	5	16	W807-5
W804-6	27	54	26	M12x1,5	14	06	6	28	W807-6
W804-8	33	68	34	M16x1,5	19	08	8	64	W807-8
W804-10	33	79	43	M20x1,5	19	10	10	113	W807-10

W805 Version Knob-style black oxide treated indexing plunger without ring nut with lock nut

Art.	D	H	h	d2	d	e2	s2	d1 ^{-0,02 -0,04}	Q	Weight (gr)	WRENCH
W805-5	22	45	22	M10x1	12	17	6	05	5	23	W807-5
W805-6	27	54	26	M12x1,5	14	19	7	06	6	38	W807-6
W805-8	33	68	34	M16x1,5	19	24	8	08	8	82	W807-8
W805-10	33	79	43	M20x1,5	19	30	9	10	10	133	W807-10

WPS – BALL PLUN-
GERS AND PLUNGERS

 **ROLLMEX**

MATERIAL:

(4) Reinforced polyamide scallop knob. Fixed.

INSERTS:

- (3) Zinc plated steel spring.
- (2) Threaded steel body with wrench slot.
- (1) Hardened high resistance steel plunger pin.
- (5) Threaded steel lock nut (UNI 5589).

The knob-style indexing plunger can be screwed into place by hand. On request, to facilitate assembly, a special zinc plated locking wrench be supplied.

ATTENTION: The manufacturer recommends making the hole for the plunger pin with a tolerance of H7.

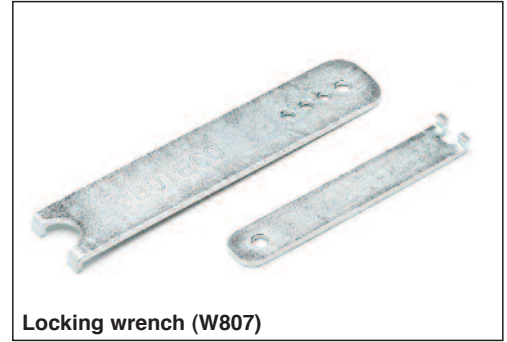
SURFACES:

- (4) Black satin finish (RAL 9011).
- (1,2,5) Black-oxide finish.

Packs containing 10 pieces.

SPECIAL REQUESTS:

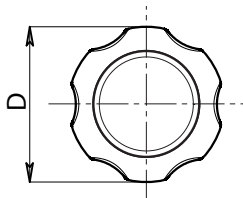
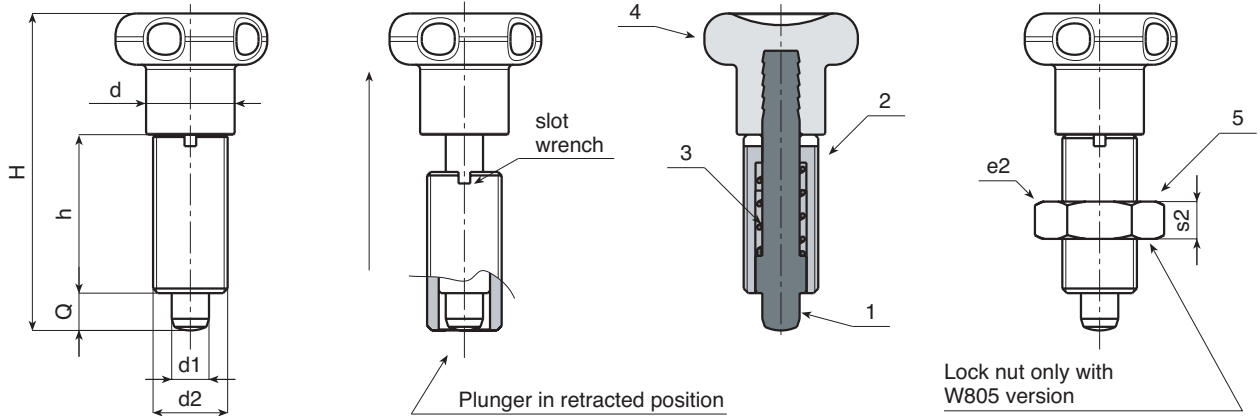
- On request and for special quantities the knob is available in a choice of colours as indicated in the table on page 23.
- On request a locking wrench can be supplied.



Locking wrench (W807)



Art. W805 + wrench




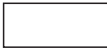














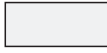











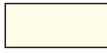

**WPS – BALL PLUN-
GERS AND PLUNGERS**

© ROLLMEX - Reproduction prohibited




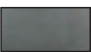
COLOUR CHART

R A L			
COLOUR		RAL	CODE
Black		9011	01
Orange		2004	02
Orange		2011	03
White		9010	04
Blue		5002	05
Blue		5005	06
Blue		5015	07
Blue		5018	19
Blue		5019	21
Blue		5010	22
Yellow		1007	09
Yellow		1021	10
Grey		7024	12
Grey		7035	13
Red		3000	16
Green		6024	17

O T H E R C O L O U R S			
COLOUR		REF.	CODE
White		-	52
Blue		-	53
Blue		pant. 645 U	54
Blue		pant. 300	55
Grey		-	57
Grey		-	59
Grey		NCS 7500	60
Red		-	64
Red		-	65
Natural		-	66
Green		-	70
Brown		-	71
Cream		-	72
Violet		-	73


METAL COLOUR TABLE


A  Anodized

B  Black oxide

D  Dacromet

H  Nickel plated

V  Painted black

Z  Galvanised



WWW.ROLLMEX.FI

ROLLMEX Oy

Takojankatu 4 - 33540 TAMPERE
Push. 010-6661122 - Fax 03-3640072
tamper@rollmex.fi

Karjalankatu 21 - 15140 LAHTI
Push. 010-6661121 - Fax 03-7511026
lahti@rollmex.fi

AUTHORISED RESELLER