

STAINLESS STEEL MACHINE FEET



ROLLMEX OY
Takojankatu 4
33540 **TAMPERE**
Tel. 010 666 1122
tampere@rollmex.fi

ROLLMEX OY
Karjalankatu 21
15140 **LAHTI**
Tel. 010 666 1121
lahti@rollmex.fi

ROLLMEX

STAINLESS STEEL MACHINE FEET

TYPE H

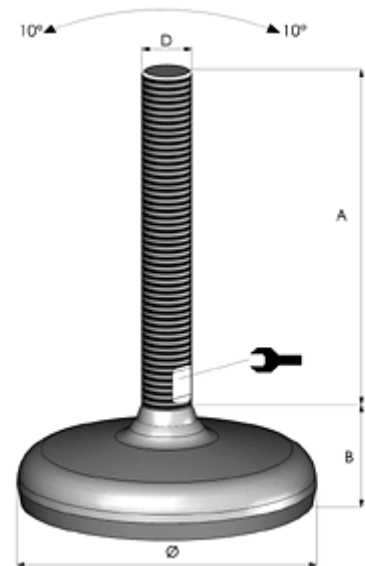
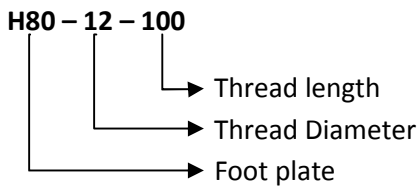
Ultrahygienic model with covered transition between foot plate and thread.

The vulcanized rubber conforms with FDA standard guidelines for rubber products concerning the food-industry. With its rounded and hygienic design, this foot is easy to clean.

Admits up to 10° slopes on floors and equipment.



Ordering example:



FOOT PLATE					
	H 60	H 80	H 100	H 120	H 140
Diameter Ø	60 mm	80 mm	100 mm	120 mm	140 mm
Height B	31 mm	32 mm	36 mm	41 mm	43 mm
Nom. load	7 000 N	15 000 N	20 000 N	30 000 N	40 000 N

Foot plate and thread can be combined freely.

THREAD							
Length A	D M 12	D M 16	D M20	D M24	D M30	D M36	D M42
50 mm	○	○	-	-	-	-	-
70 mm	○	○	○	○	○	○	-
100 mm	○	○	○	○	○	○	○
150 mm	○	○	○	○	○	○	○
180 mm	○	○	○	○	○	○	○
230 mm	○	○	○	○	○	○	○
310 mm	○	○	○	○	○	○	○
Key	10 mm	13 mm	17 mm	19 mm	24 mm	30 mm	36 mm

STAINLESS STEEL MACHINE FEET

TYPE H - FIXING

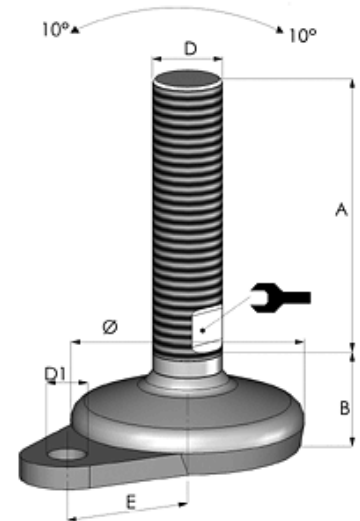
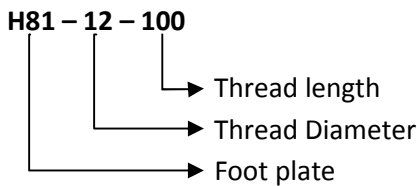
This model has an embedded fixing plate enabling the fixed foot to absorb vibration. Supplied with one or two fixing holes.

The vulcanized rubber is FDA certified and approved for use in the food-industry. With its rounded and hygienic design, this foot is easy to clean.

Admits up to 10° slopes on floors and equipment.



Ordering example:



FOOT PLATE			
	H 81	H 82	H 101
Diameter Ø	80 mm	80 mm	100 mm
Height B	34 mm	34 mm	39 mm
Length E	58 mm	58 mm	68 mm
Hole diam. D 1	14 mm	14 mm	14 mm
Nom. load	15 000 N	15 000 N	20 000 N

Foot plate and thread can be combined freely.

THREAD							
Length A	D M 12	D M 16	D M20	D M24	D M30	D M36	D M42
50 mm	○	○	-	-	-	-	-
70 mm	○	○	○	○	○	○	-
100 mm	○	○	○	○	○	○	○
150 mm	○	○	○	○	○	○	○
180 mm	○	○	○	○	○	○	○
230 mm	○	○	○	○	○	○	○
310 mm	○	○	○	○	○	○	○
	10 mm	13 mm	17 mm	19 mm	24 mm	30 mm	36 mm

STAINLESS STEEL MACHINE FEET

TYPE M

This model is available in a wide range to optimize choice.

The vulcanized rubber conforms with FDA standard guidelines for rubber products concerning the food-industry. Smoothly rounded design for ease of cleaning.

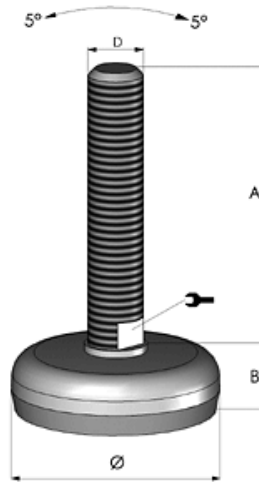
Admits up to 5° slopes on floors and equipment.



Ordering example:

M75 - 12 - 100

- Thread length
- Thread Diameter
- Foot plate




FOOT PLATE

	M 40	M 50	M 75	M 105	M 100	M 125	M 150	M 180
Diameter Ø	40 mm	50 mm	75 mm	100 mm	100 mm	125 mm	150 mm	180 mm
Height B	20 mm	21 mm	22 mm	30 mm	32 mm	37 mm	40 mm	40 mm
Nom. load	2 500 N	4 000 N	10 000 N	12 000 N	22 000 N	30 000 N	45 000 N	50 000 N

Foot plate and thread can be combined freely.

THREAD

Length A	D M 10**	D M 12	D M 16	D M 20	D M 24	D M 30	D M 36	D M 42
50 mm	○	○	○	-	-	-	-	-
70 mm	○	○	○	○	○	○	○	-
100 mm	○	○	○	○	○	○	○	○
150 mm	○	○	○	○	○	○	○	○
180 mm	○	○	○	○	○	○	○	○
230 mm	○	○	○	○	○	○	○	○
310 mm	-	○	○	○	○	○	○	○
	8 mm	10 mm	13 mm	17 mm	19 mm	24 mm	30 mm	36 mm

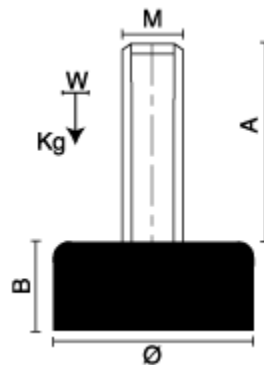
** M10 thread supplied only for foot plates M40, M50 and M75

RUBBER FEET

TYPE B

Soft rubber model suitable for light equipment standing on smooth surfaces.

Stainless steel bolt embedded in black rubber conforming with FDA standard guidelines for rubber products.



Type B					
	Diameter \varnothing	Thread D	Length A	Foot height B	Max load
B20-06-020	20 mm	6 mm	20 mm	13 mm	100 N
B25-08-020	25 mm	8 mm	20 mm	14 mm	150 N
B30-10-025	30 mm	10 mm	25 mm	16 mm	250 N
B30-10-050	30 mm	10 mm	50 mm	16 mm	250 N
B40-12-040	40 mm	12 mm	40 mm	20 mm	650 N
B40-12-070	40 mm	12 mm	70 mm	20 mm	650 N
B50-12-040	50 mm	12 mm	40 mm	20 mm	900 N

TYPE P WELDING PLATES

The welding plates provide complete closure of the tube after welding.
The welding plates are also available for rectangular tubes.

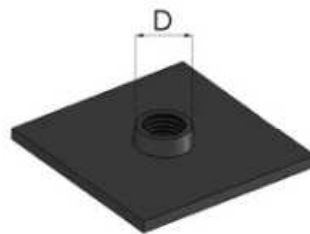
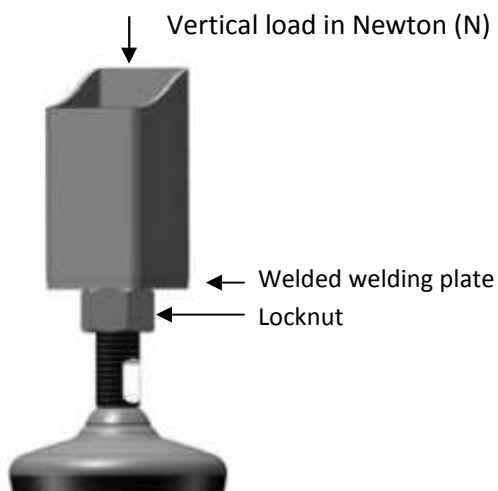


Plate size	D M 8	D M 10	D M 12	D M 16	D M 20	D M 24
25 x 25 mm	○	●	-	-	-	-
30 x 30 mm	○	●	●	-	-	-
35 x 35 mm	○	○	●	●	-	-
40 x 40 mm	○	●	●	●	●	-
45 x 45 mm	-	○	○	○	○	-
50 x 50 mm	-	○	○	●	●	○
60 x 60 mm	-	○	○	○	○	○
70 x 70 mm	-	-	-	○	○	○
80 x 80 mm	-	-	-	○	○	○
100 x 100 mm	-	-	-	○	○	○
50 x 25 mm	○	○	○	-	-	-
50 x 30 mm	○	○	○	○	-	-
60 x 30 mm	-	-	○	○	-	-
60 x 40 mm	-	-	○	○	○	○
80 x 40 mm	-	-	-	○	○	○
80 x 50 mm	-	-	-	○	○	○
80 x 60 mm	-	-	-	○	○	○
100 x 50 mm	-	-	-	○	○	○

● = in stock ○ = deliverytime about one week

LOAD INFORMATION

Welding plates



2,5 mm plate 3 mm plate 4 mm plate

Load in Newton (N)	2,5 mm plate		3 mm plate		4 mm plate	
	D M 8	D M 10	D M 12	D M 16	D M 20	D M 24
25 x 25 mm	4 000	4 400	-	-	-	-
30 x 30 mm	3 100	3 550	3 700	-	-	-
35 x 35 mm	2 650	3 150	3 400	5 600	-	-
40 x 40 mm	2 100	2 500	3 100	5 600	10 500	-
45 x 45 mm	-	2 200	2 700	4 700	9 000	-
50 x 50 mm	-	1 800	2 400	6 000	8 500	11 500
60 x 60 mm	-	-	-	4 500	7 600	10 500
70 x 70 mm	-	-	-	4 000	7 200	9 000
80 x 80 mm	-	-	-	3 600	6 400	9 000
100 x 100 mm	-	-	-	3 000	4 200	7 200
50 x 25 mm	2 300	2 800	3 600	-	-	-
50 x 30 mm	2 100	2 500	3 300	5 800	-	-
60 x 30 mm	-	-	2 800	6 400	-	-
60 x 40 mm	-	-	2 200	5 600	7 500	12 000
80 x 40 mm	-	-	-	4 600	7 000	11 800
80 x 50 mm	-	-	-	3 900	5 800	10 500
80 x 60 mm	-	-	-	3 500	5 600	7 200
100 x 50 mm	-	-	-	3 800	6 800	7 900